
**UC
Southern
Regional
Library
Facility**

2012/13 Annual Report

Significant Events and Accomplishments 2012/13

Transform the Collection by continuing to build shared collections, by expanding preservation reformatting services, and by providing excellent management of the database systems for collection inventory control and report capabilities.

- New Deposits: in 2012/13, the SRLF received 156,477 new items.
- New items added to the collections in 2012/13 totaled 136,689.

UCI Libraries	15,003	11%
UCLA Libraries	63,251	45%
UCLA Film & Television Archive	0	0
UCR Libraries	10,770	7%
UCSD Libraries	8,819	6%
UCSB Libraries	10,799	7%
UCL Shared Print Collection	21,981	16%
UC JSTOR Archive	6,206	4%
WEST Shared Print Archive	6,066	4%

- In 2012/13 the SRLF continued to weed duplicate copies from the circulating collections in an effort to reclaim shelf space for incoming deposits. Duplicate journal volumes are pulled from the stacks, the volumes are reviewed and the best-condition copy is retained. The discard volumes are paired with incoming volumes of like size, and processing staff transfer the item barcode from the discard to the new item. The de-duplication effort is most often applied as incoming WEST and JSTOR volumes are processed into the shared print collections.
- Paging and ILL requests totaled 100,781, a decrease of 3% from the previous year. The reduction in paging and ILL workloads continues a trend that began in 2009/10. However, among those requests the

SRLF fulfilled more requests with document delivery in lieu of loans. In 2012/13 document delivery was provided for 7,275 requests, either direct to the patron via the Web or to the requesting libraries via Ariel. This represents a 20% increase in document delivery over the previous year.

- ILL requests from UC and non-UC libraries now make up 36% of all requests received at the SRLF, while 64% of requests originate at UCLA libraries and from SRLF's onsite users. Non-UC requests now represent more than 53% of the SRLF's total ILL workload. Last year the SRLF became a member of SHARES, a cooperative ILL exchange program that provides fast, lower-cost services to member libraries. The SRLF participation has not adversely impacted the UC request workload, and we will continue serving SHARES members in the coming year.
- SRLF Preservation Imaging continued to serve the UC needs for preservation reformatting of library collections. Orders for microfilm duplications increased by 152% over the previous year, and we saw a 3-fold increase in digital image captures. SRLF continues to support UCLA Library's digital reformatting efforts with an emphasis on ephemeral collections. In 2012/13 those ephemeral collections included Minasian manuscripts and correspondence, Ethiopian posters, and items from the Garry South Campaign Literature collection.

A new CopiBook scanner and the Phase One digital camera system, both purchased in 2012/13, have enhanced the production capacity and will enable Preservation Imaging staff to capture high quality images at faster speeds, particularly for oversize flat documents such as posters, maps, and architectural drawings.

Preservation imaging statistics for 2012/13 include the following:

Microfilm images filmed (frames)	19,935
Microfilm reels produced	642
Digital scanning images captured	36,514
Microfilm-to-digital images scanned	31,035

- JSTOR team members focused attention of completing Phase 5 validation (345 distinct new titles and circa 4.5 million pages of content) as well as the review and distribution of new title lists for Phase 6. Completion of the Phase 5 titles occupied the first and second quarters of 2012/13, followed by the annual Moving Wall additions in early 2013. Since inception in 2005, the JSTOR Team has validated a grand total of 37 million pages and compiled a print archive of 72,403 volumes. The JSTOR de-duplication service was offered to UC Libraries in 2012/13, and four campuses took advantage of this service. Rather than responding to volume-specific call for holdings, these campuses sent their entire

runs of Phase 5 titles and as a result cleared much more shelf space at the campus locations. Participating campuses included UCI, UCLA, UCR, and UCSD. At the SRLF, 8,823 duplicate volumes received from campuses were discarded into the recycling stream.

The JSTOR Project successfully passed its sixth audit in February 2013 with an audit score of 99.96% accuracy.

- Participation in WEST- Cycle 2 Archive Building: SRLF served as one of six Archive Builder locations, along with UC Northern Regional Library Facility, Stanford University, Arizona State University, Rice University and University of Kansas. Between July and September 2012 SRLF's WEST Coordinator Tin Tran spent considerable time reviewing the WEST Bronze, Silver and Gold journal family lists that had been assigned to SRLF, identifying the locations and holdings for those journal families. The Silver and Gold lists included very large groups of titles from which the SRLF was able to select preferred titles. Work on disclosures and validation of the Silver and Gold titles continued through March, and on May 30th a complete extract of the WEST Bronze, Silver and Gold holdings at the SRLF was produced for the Print Archive Preservation Registry (PAPR). In total, the SRLF committed 36,586 volumes to WEST Bronze, Silver, and Gold Archives in Cycle 2. The total number of WEST volumes held at the SRLF for Cycles 1 and 2 is 51,372.

- Technology and network support activities during the year included the installation new CopiBook scanners that serve document delivery and preservation imaging projects; installation of a Google document scanner (offered by Google at no cost to UC Libraries) that will be used for digitization of loose documents; installation of the Phase One Camera that will enhance digital capture of large oversize documents and 3D objects. Staff assisted the UCLA Library IT staff during installation of a new networking switch and patch cables for the SRLF network. SRLF's web development team also loaded the JSTOR pagination data for titles that will be archived in Phase 6 (ca. 300 new titles and 3.4 million pages of content). The JSTOR pagination data was uploaded into the local SRLF/JSTOR database; project staff at the SRLF and library staff at any UC campus access the SRLF/JSTOR database for current listings of validated JSTOR titles, issue-level holdings data, and the JSTOR Wish List for missing content.

The web development team continues to make progress on the Intranet site content migration to Sitefinity CMS. Basic content has migrated but some web applications running on the old site are undergoing conversion and enhancement to current web standards. The SRLF's classic ASP applications that support FATA circulation, PDF document delivery, and SRLF Deposit Manager will also be rewritten to current web standards.

SRLF programmers continue to collaborate with Digital Initiatives and Information Technology (DI&IT) staff on UCLA Library's Virtual Desktop Infrastructure (VDI) Project. SRLF is using a thin client for testing and evaluation of VDI potential at the SRLF.

Make Specialized Collections Accessible through digitization projects, and continue to explore options and solutions for preserving and servicing the newspaper collection.

- Preservation Imaging staff focused their efforts on digitization of UCLA Library Special Collections' manuscript and photographic collections, with emphasis on the Minasian manuscripts and Armenian correspondence, the Arkatov photograph collection, the Ufahamu journal (published by the UCLA African Studies Center), Garry South Campaign Literature collection, music manuscripts from the Berman Collection, and an Ethiopian posters collection.
- Newspaper Bundles Review and Discard Project: collaboration continued with the UCLA Preservation Officer, with Print Acquisitions staff, and with the Center for Research Libraries (CRL) to identify newspaper holdings that can be transferred to CRL. SRLF began sending bundles of newspapers to CRL in May, in weekly shipments of 80-90 bundles each. Approximately 500 bundles had been shipped to CRL by the end of June 2013. Next up will be titles held jointly at UCLA and SRLF, with bundles to be consolidated at the SRLF prior to shipment to CRL.
- In 2012/13 SRLF Access Services expanded document delivery service to the UCLA Library community, providing no-cost web delivery of articles from the JSTOR, WEST, and UCL Licensed Content print archives. By providing document delivery of journal content from these shared print archives, the physical volumes are protected from wear-and-tear damage or loss due to circulation, and the UCLA Library users receive the same level of service that has been provided to library users at all other UC campuses.

Enhance Learning Spaces with improvements to physical and virtual spaces.

- In collaboration with colleagues at the NRLF, a survey of the remaining spaces in NRLF and SRLF was completed in early 2012, and then revised in 2013 with updated fill dates for the SRLF.
- SRLF managers met with staff from the UCLA Film & Television Archive (FATA) in March to discuss strategic plans for FATA collections relocation in 2014. With careful management of deposits through 2013 followed by the exit of FATA collections in early 2014, the SRLF will be able to provide uninterrupted service and storage for the UC Libraries through 2016/17.

Goals and Strategies for 2013/14

- ***Build and Enhance Research Collections...*** *continue efforts to build shared collections at the SRLF.*
 - Building shared collections: RLF persistent deposits; UCL Shared Print program; JSTOR Print Archive; WEST Bronze, Silver, and Gold archives. Support current annual allocations for the UC campuses and continue partnerships with JSTOR (3.4 million pages in 8,300 volumes) and WEST (Bronze, Silver, and Gold titles in 2013/14 with estimated volumes of 35,000 at SRLF). Continue effort to fill JSTOR Archive gaps, with outreach to non-UC Libraries.
 - Maintain staff resources at the levels necessary to receive and process 127,000 annual deposits from the UC Libraries, 8,300 volumes for the UC/JSTOR Archive, 21,000 new issues of Shared Print for Licensed Content, and ca. 35,000 volumes for the WEST Bronze, Silver and Gold archives.
 - Support preservation imaging and digital reformatting services at the SRLF with adequate staff resources and variety of equipment and software programs to handle print and non-print formats.
 - Continue collaborations with Print Acquisitions and Preservation staff to transfer newspaper holdings to CRL. Develop retention policy, workflow and deposit procedures for newspaper titles that will remain in the UCLA and SRLF collections.
 - Incorporate continuous process improvement. Working together with UCLA Library units, share ideas and explore options for improving workflows within technical processing, resource sharing, shared print programs, and the preservation imaging programs. Coordinate SRLF process improvements with the efforts of UCLA Print Acquisitions, Cataloging/Metadata, Scholarly Communication and Licensing, Preservation, and the Digital Library.

- ***Transform Research Services ...*** *explore team approach to research support and build tools, procedures, and expertise to develop, manage, and share resources.*

- Collaborate with UCLA departments to identify collections for digitization: Print Acquisitions, Cataloging/Metadata, Preservation, LSC, DL, and SRLF work together to establish efficient workflows; prioritize the projects for digitization; adhere to standards for quality and improved discovery. When the legacy print materials are requested for use, ensure quick retrieval and safe delivery of the items to LSC.
- Enhance and expand existing web-based applications and databases at SRLF; provide access to these tools and resources via the SRLF intranet or internet site; explore options for sharing the applications or modeling those applications with other collections management units.

Examples include: improved data for SRLF Request Manager; JSTOR and WEST Gap Lists for UC and non-UC contributions; SRLF Lost items report (for replacements); staff message center.

➤ ***Focus on Teaching and Learning ...*** through improved discovery and access to the collections.

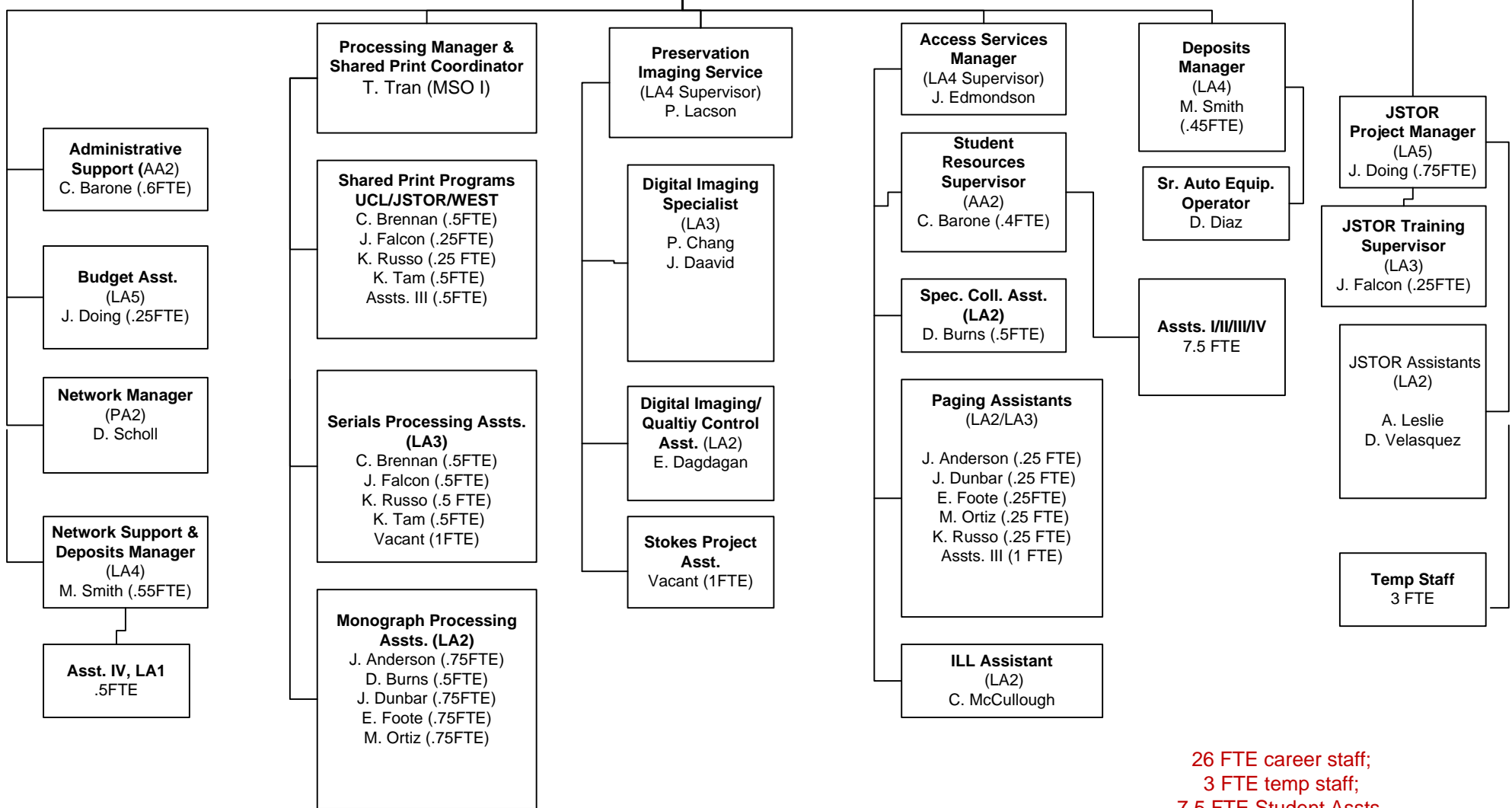
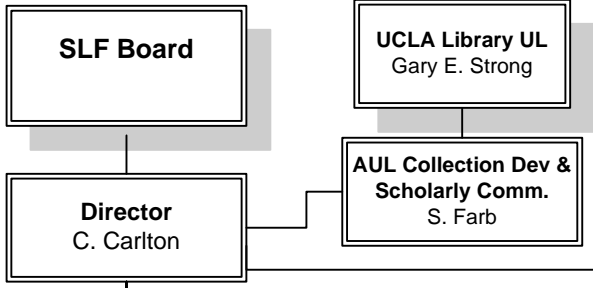
- Accurately record the holdings in local and WorldCat systems; respond quickly to resource sharing requests; provide digital copies for delivery of content on demand. This goal is closely aligned with *Transform Research Services*, and collaboration with other collection management units.
- Upgrade the SRLF websites for improved design elements and for compatibility with mobile devices.

➤ ***Reconceptualize the Library as Place ...*** identify and provide additional capacity to support growth and changing needs, both in usage and in collections.

- Expand existing storage capacity at the SRLF for the UC Libraries print collections, which in turn allows libraries to downsize their on-site print collections and reconfigure spaces for teaching and learning. This will be possible through:
 - Careful de-selection of duplicate journal holdings where other trusted shared print archives exist (JSTOR, WEST Libraries; de-duplication across the UC RLFs);
 - Preparation to reclaim space as UCLA Film & Television Archive collections are moved to a new facility in Santa Clarita (2013/14); meanwhile shift FATA items as necessary to accommodate incoming UC Libraries material.

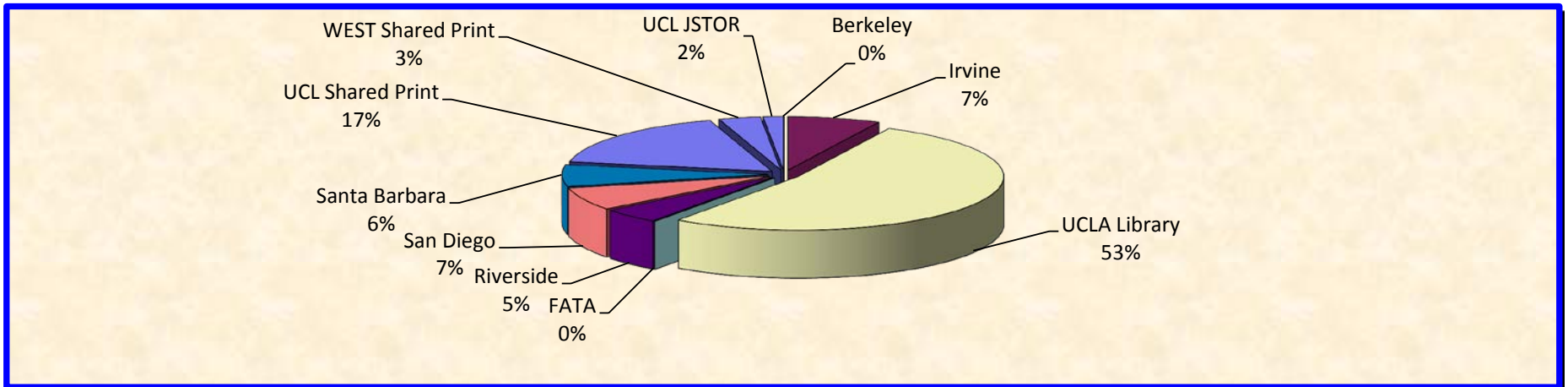
- Work with UCLA Library and Capital Programs to secure approval and funding for SRLF Phase 3.
- Continue to provide no-cost document delivery service to UCLA users of JSTOR and WEST shared print journal archives. This service is now available to users at all 10 UC campuses.

University of California
 Southern Regional Library Facility
 Org Chart June 2013



26 FTE career staff;
 3 FTE temp staff;
 7.5 FTE Student Assts.

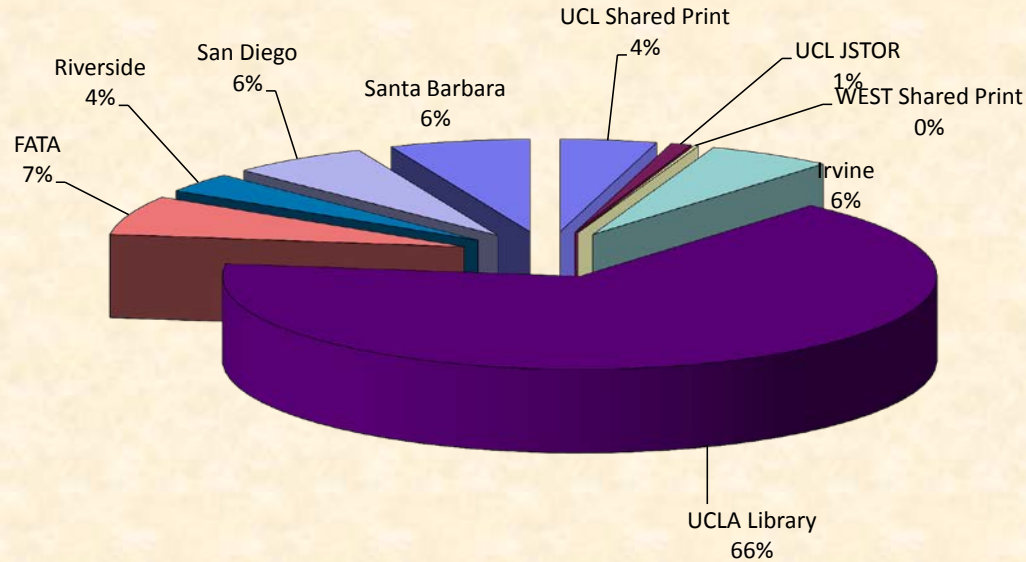
**ITEMS RECEIVED
JULY 2012 thru JUNE 2013**



Number of Items Received

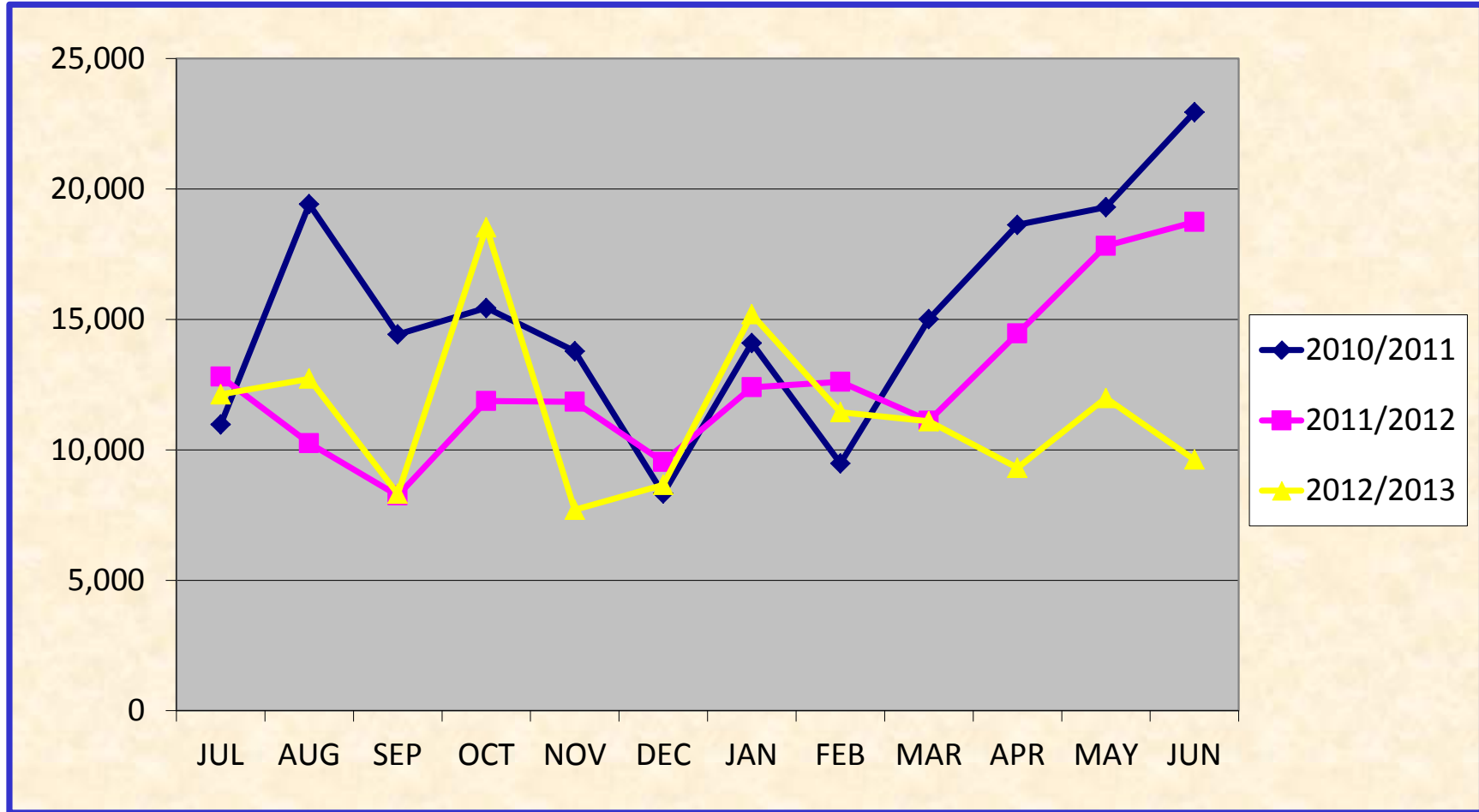
	Jul-12	Aug-12	Sep-12	Oct-12	Nov-12	Dec-12	Jan-13	Feb-13	Mar-13	Apr-13	May-13	Jun-13	To Date
Berkeley													0
Irvine		3,707		3,262			2,358			2,073			11,400
Los Angeles													
UCLA Library	5,417	7,456	7,673	9,474	7,154	6,804	4,202	6,281	9,000	6,914	7,015	4,934	82,324
FATA													0
Los Angeles Subtotal	5,417	7,456	7,673	9,474	7,154	6,804	4,202	6,281	9,000	6,914	7,015	4,934	82,324
Riverside		2,971		325				2,078				1,813	7,187
San Diego	324	1,252	1,605						1,743	1,158	2,315	2,333	10,730
Santa Barbara	2,035	2,080	1,736	544	1,912	1,826					107		10,240
UCL Shared Print					8,616	1,654			4,961			11,728	26,959
WEST Shared Print						488	3,985	260	405				5,138
UCL JSTOR										1,117	329	1,053	2,499
Deposits Received	7,776	17,466	11,014	13,605	9,066	8,630	6,560	8,359	10,743	11,262	9,766	10,133	156,477

U. C. Southern Regional Library Facility Items Added By Campus From July 2012 Thru June 2013



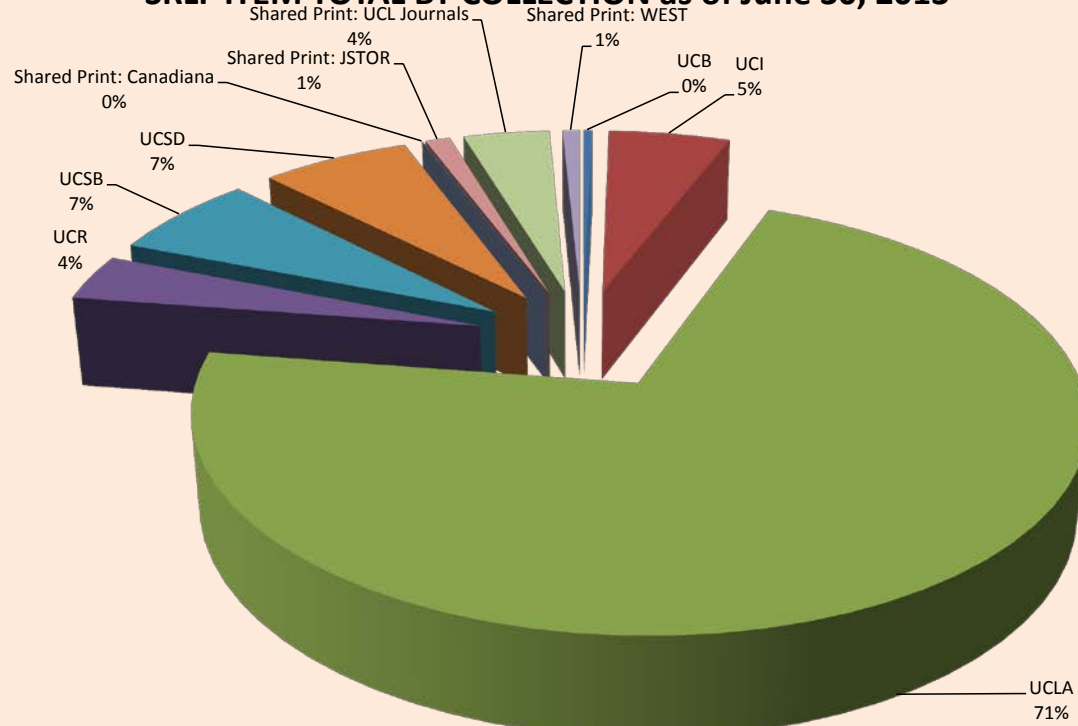
Items Added	Jul-12	Aug-12	Sep-12	Oct-12	Nov-12	Dec-12	Jan-13	Feb-13	Mar-13	Apr-13	May-13	Jun-13	2012/13	1987/2012	GRAND
	TOTAL	TOTAL	TOTAL	TOTAL	TOTAL	TOTAL	TOTAL	TOTAL	TOTAL	TOTAL	TOTAL	TOTAL	TOTAL	TOTAL	TOTAL
UCL Shared Print	2,261	1,859	1,893	2,068	1,280	1,400	3,424	1,222	1,923	2,967	1,684	0	21,981	258,865	280,846
UCL JSTOR	1,685	648	624	450	383	374	733	593	220	144	352	0	6,206	55,084	61,290
WEST Shared Print	0	0	0	0	0	10	4,644	337	1,075	0	0	0	6,066	5,872	11,938
Irvine	46	2,104	201	1,055	1,615	1,415	4,056	1,936	609	288	840	838	15,003	350,917	365,920
Los Angeles															
UCLA Library	8,694	3,784	3,405	13,640	4,462	5,376	2,343	4,625	4,446	3,578	7,360	1,538	63,251	4,185,119	4,248,370
FATA													0	439,443	439,443
Los Angeles Sub-Total	8,694	3,784	3,405	13,640	4,462	5,376	2,343	4,625	4,446	3,578	7,360	1,538	63,251	4,624,562	4,687,813
Riverside	715	2,588	558	64	99	119	15	1,741	1,259	526	298	2,788	10,770	210,413	221,183
San Diego	294	2,086	1,149	1,122	48	0	0	220	511	800	585	2,004	8,819	391,900	400,719
Santa Barbara	112	306	1,106	580	193	333	712	1,363	1,272	1,148	1,217	2,457	10,799	399,764	410,563
Total	12,122	12,727	8,312	18,529	7,697	8,653	15,194	11,444	11,095	9,307	11,984	9,625	136,689	6,242,293	6,378,982

ITEMS ADDED JULY 2010 thru JUNE 2013



Added	JUL	AUG	SEP	OCT	NOV	DEC	JAN	FEB	MAR	APR	MAY	JUN	TOTAL
2010/2011	10,971	19,412	14,421	15,438	13,783	8,321	14,097	9,477	15,009	18,622	19,299	22,945	181,795
2011/2012	12,804	10,254	8,248	11,869	11,839	9,536	12,396	12,608	11,118	14,459	17,813	18,736	151,680
2012/2013	12,122	12,727	8,312	18,529	7,697	8,653	15,194	11,444	11,095	9,307	11,984	9,625	136,689
Total	35,897	42,393	30,981	45,836	33,319	26,510	41,687	33,529	37,222	42,388	49,096	51,306	470,164

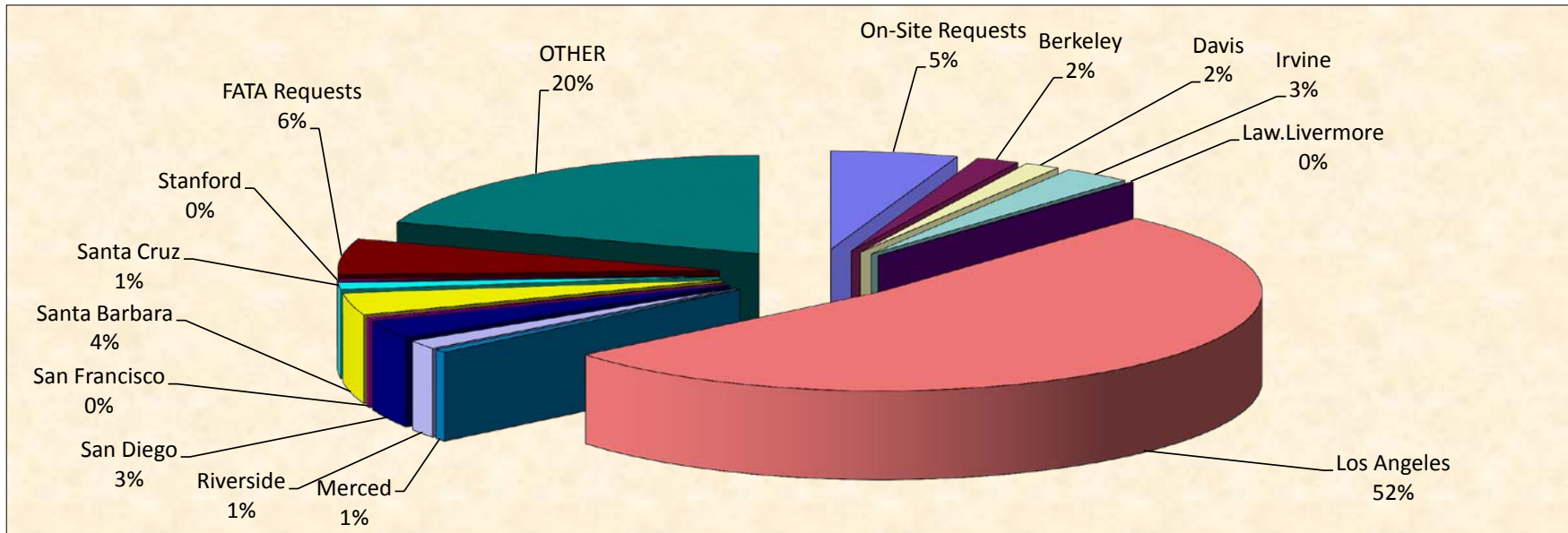
SRLF ITEM TOTAL BY COLLECTION as of June 30, 2013



Southern Regional Library Facility		
Item Totals by Collection, June 30, 2013		
Collection	% of Collection	Items Deposited
UCB General Collection	0.40%	25,953
UCI General Collection	5.43%	355,795
UCLA General Collection	71.55%	4,689,839
UCR General Collection	3.64%	238,280
UCSB General Collection	6.63%	434,604
UCSD General Collection	6.61%	433,240
Shared Print: Canadiana	0.01%	971
Shared Print: JSTOR	1.10%	72,403
Shared Print: UCL Journals	3.85%	252,035
Shared Print: WEST	0.78%	51,372
Grand Total	100.00%	6,554,492

Southern Regional Library Facility		
Item Totals by Campus, June 30, 2013		
Campus	Item Count	% Contributed to SRLF
SRUCL	279741	4.27%
UCB	26992	0.41%
UCD	1108	0.02%
UCI	368330	5.62%
UCLA	4731037	72.18%
UCR	247531	3.78%
UCSB	438637	6.69%
UCSC	10821	0.17%
UCSD	450259	6.87%
UCSF	36	0.00%
Total	6554492	100.0000%

PAGING REQUESTS JULY 2012 thru JUNE 2013



	Jul-12	Aug-12	Sep-12	Oct-12	Nov-12	Dec-12	Jan-13	Feb-13	Mar-13	Apr-13	May-13	Jun-13	To Date
On-Site Requests	430	549	324	505	351	314	545	576	411	480	550	393	5,428

Origin of Paging Requests

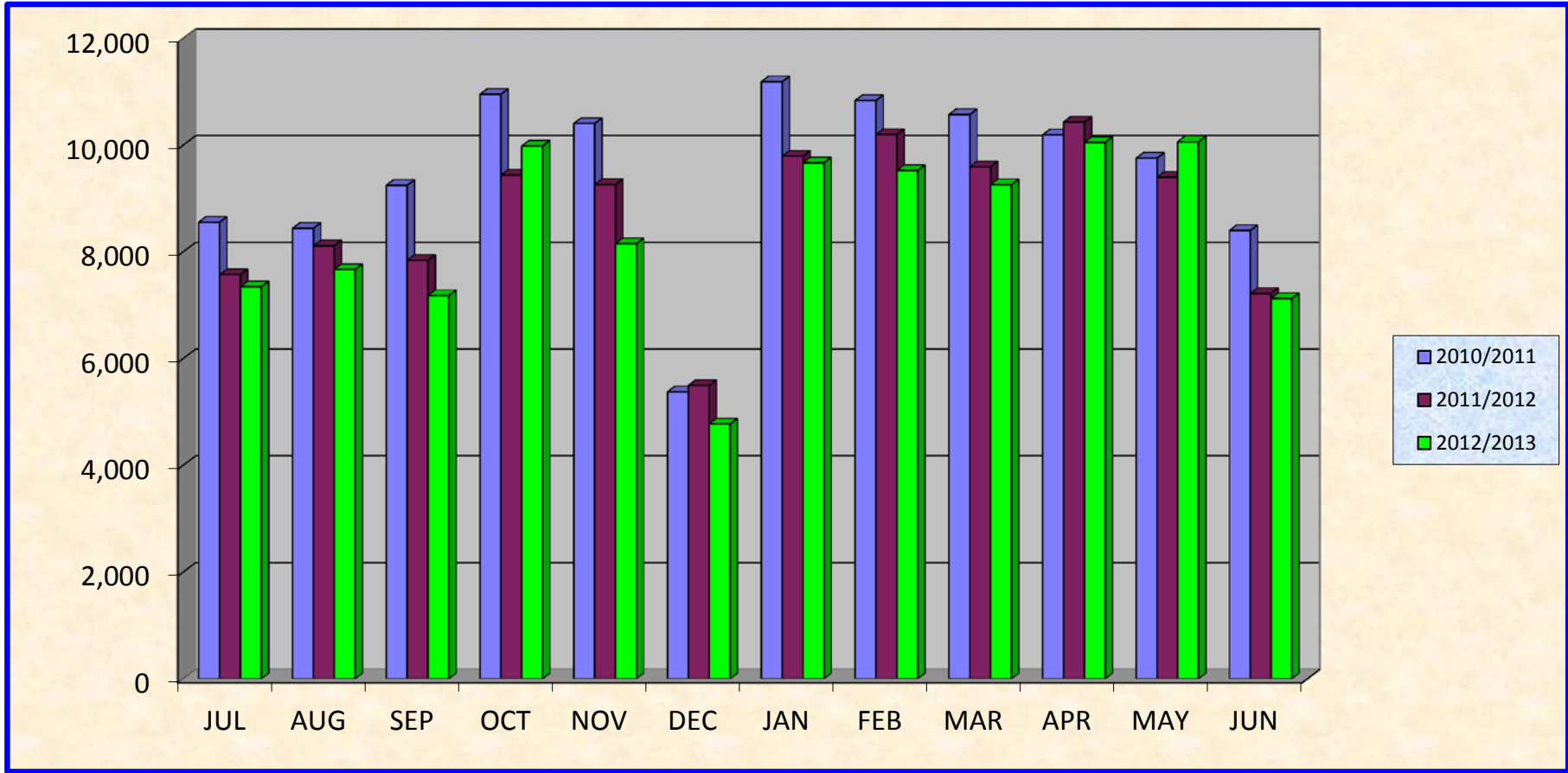
	Jul-12	Aug-12	Sep-12	Oct-12	Nov-12	Dec-12	Jan-13	Feb-13	Mar-13	Apr-13	May-13	Jun-13	To Date
Berkeley	130	131	155	204	161	74	151	221	158	225	110	96	1,816
Davis	95	134	125	216	102	41	154	151	96	118	166	95	1,493
Irvine	155	287	207	283	234	96	224	277	209	224	449	274	2,919
Law.Livermore	6	6	8	8	13	1	9	17	13	6	6	3	96
Los Angeles	3,947	3,861	3,596	5,187	4,306	2,603	5,088	5,146	4,725	5,098	5,257	3,948	52,762
Merced	31	46	53	49	38	5	44	50	60	99	40	42	557
Riverside	145	127	88	143	84	53	137	149	130	152	151	102	1,461
San Diego	238	282	201	387	192	131	416	265	239	330	233	171	3,085
San Francisco	11	16	10	13	9	8	20	24	14	13	30	14	182
Santa Barbara	271	282	272	404	271	147	422	256	338	348	373	236	3,620
Santa Cruz	76	98	108	115	77	43	107	113	95	114	116	71	1,133
Stanford	80	15	17	19	19	13	27	27	31	40	28	15	331
SUB TOTAL	5,185	5,285	4,840	7,028	5,506	3,215	6,799	6,696	6,108	6,767	6,959	5,067	69,455

FATA Requests	241	328	368	335	317	322	559	416	875	888	920	364	5,933
----------------------	-----	-----	-----	-----	-----	-----	-----	-----	-----	-----	-----	-----	-------

OTHER	1488	1505	1647	2114	1977	923	1764	1835	1864	1914	1634	1300	19,965
--------------	------	------	------	------	------	-----	------	------	------	------	------	------	--------

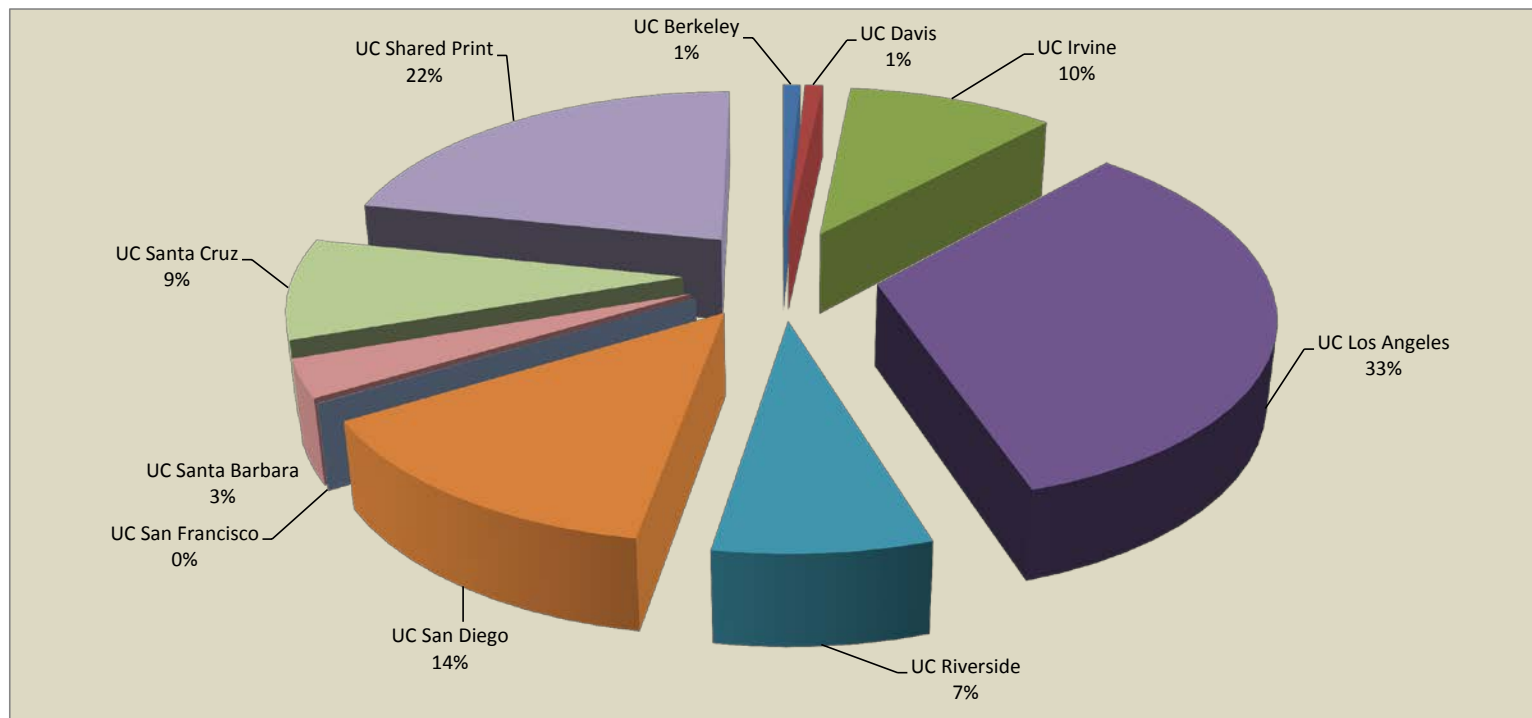
GRAND TOTAL	7,344	7,667	7,179	9,982	8,151	4,774	9,667	9,523	9,258	10,049	10,063	7,124	100,781
--------------------	--------------	--------------	--------------	--------------	--------------	--------------	--------------	--------------	--------------	---------------	---------------	--------------	----------------

**PAGING REQUESTS
JULY 2010 thru JUNE 2013**



	JUL	AUG	SEP	OCT	NOV	DEC	JAN	FEB	MAR	APR	MAY	JUN	TOTAL
2010/2011	8,555	8,439	9,246	10,952	10,405	5,376	11,187	10,836	10,572	10,192	9,755	8,399	113,914
2011/2012	7,573	8,112	7,842	9,439	9,261	5,495	9,792	10,200	9,595	10,431	9,397	7,220	104,357
2012/2013	7,344	7,667	7,179	9,982	8,151	4,774	9,667	9,523	9,258	10,049	10,063	7,124	100,781
TOTAL	23,472	24,218	24,267	30,373	27,817	15,645	30,646	30,559	29,425	30,672	29,215	22,743	319,052

Southern Regional Library Facility
Report on Campus Contributions to Shared Print Collections at SRLF 2012-2013

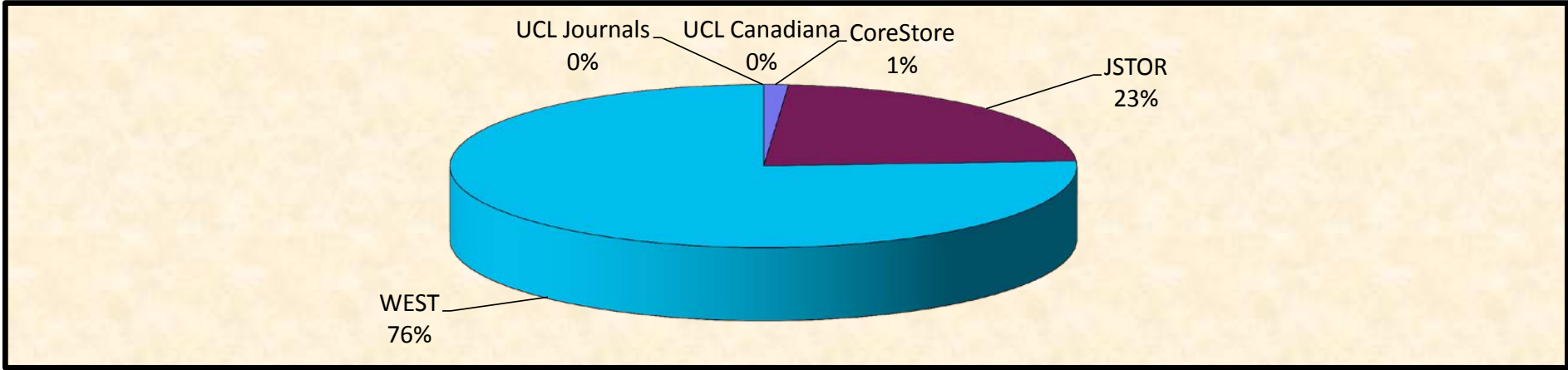


Campus	JSTOR 2006 2012	JSTOR 2012/2013	JSTOR Grand Total	CORESTORE-WEST 2005-2012	WEST 2012/2013	WEST Grand Total	Ultimate Total to Shared Print	% Contributed to Shared Print
UC Berkeley	1038	1	1039	0	0	0	1039	0.84%
UC Davis	1024	0	1024	0	80	80	1104	0.89%
UC Irvine	9450	817	10267	893	1375	2268	12535	10.13%
UC Los Angeles	19316	2153	21469	8938	10787	19725	41194	33.28%
UC Riverside	6253	1012	7265	874	1112	1986	9251	7.47%
UC San Diego	10592	1894	12486	1547	2986	4533	17019	13.75%
UC San Francisco	30	0	30	0	0	0	30	0.02%
UC Santa Barbara	2907	72	2979	174	880	1054	4033	3.26%
UC Santa Cruz	10779	1	10780	0	8	8	10788	8.72%
UC Shared Print	4895	169	5064	2360	19358	21718	26782	21.64%
TOTAL	66284	6119	72403	14786	36586	51372	123775	1

NOTE: CORESTORE items contributed to WEST Program in 2011/2012. CORESTORE 2005/2006 total subsumed into WEST 2011/2012 total.

Paging Requests for Shared Print Collections

July 2012 thru June 2013



	July 12	Aug 12	Sept. 12	Oct. 12	Nov. 12	Dec. 12	Jan. 13	Feb. 13	Mar. 13	Apr. 13	May 13	June 13	Total 2012/2013	Total from 05/06 - 11/12	Grand Total
CoreStore	0	1	0	0	0	0	0	0	0	0	0	0	1	3	4
JSTOR	0	2	5	2	1	2	2	1	0	1	1	1	18	67	85
WEST	1	9	4	5	2	4	4	9	5	9	3	5	60	39	99
UCL Journals	0	0	0	0	0	0	0	0	0	0	0	0	0	83	83
UCL Canadiana	0	0	0	0	0	0	0	0	0	0	0	0	0	21	21
Total	1	12	9	7	3	6	6	10	5	10	4	6	79	213	292