

Southern Regional
Library Facility
Annual Report
2004-05

Significant Events and Accomplishments 2004/05

- New Deposits: the SRLF received 190,448 new items, including 22,419 items for the University of California Libraries Shared Print Collection.
- New items added in 2004/05 totaled 189,946 (our goal had been to add 223,000 new items)

UCI Libraries	3,342	2%
UCLA Libraries	152,884	80%
UCR Libraries	5,829	3%
UCSD Libraries	3,395	2%
UCSB Libraries	1,199	1%
UCL Shared Print Collections	23,297	12%

- Paging requests totaled 97,458, a drop of 8% from the previous year. The SRLF filled 2,447 document delivery requests, with 98% of these requests delivered electronically either directly to the patron or to the requesting libraries via the Web.
- Voyager was successfully implemented in both Processing and Public Services during June and July, 2004 with no serious problems. New processing procedures were written and implemented for all print formats, microforms, and map deposits. Paging requests and ILL activities remained stable during the transition time, as SRLF and library staff learned the nuances of the new Voyager system.
- Successfully implemented Voyager's Call Slip request function in two of the three databases of the UCLA Library Catalog. In the UCLA Catalog, "Select an Item" enables users to place SRLF requests from the UCLA Library Collections and from the Ethnomusicology collections, directly from the OPAC screens.
- Moved off of OCLC's Prism request module and onto OCLC's *Firstsearch* to manage the OCLC ILL requests at SRLF. Almost 81% of all UC requests are now initiated and handled entirely in VDX, and this should reach 100% via VDX in 2005/06.
- With technical support from LIT programmers, the "Owning Unit Viewer" was developed in Fall, 2004. This web-based application, linked to the UCLA Library Catalog, allows library staff at all UC campuses to query the UCLA database to identify detailed SRLF holdings and the owning library data.
- SRLF's Preservation Imaging services were expanded to incorporate new technologies and capabilities for archival digitization and reformatting of print and non-print originals. Major projects for 2004/05 included working closely with UCLA's Digital Library staff to digitize various rare books, manuscripts, and map collections, and with UCLA Special Collections to digitize portions of the Los Angeles Times Photographic Archive.

- The UC/JSTOR project (to establish a paper repository of approximately 14 million pages already digitized by JSTOR from UC journal runs) began at the SRLF in January, 2005 with the appointment of an associate librarian to plan and manage the operation. Members of the UC/JSTOR Operations Advisory ad hoc committee visited most of the southern and northern campuses to discuss the project, answer questions and coordinate deposit schedules. The SRLF reading room was redesigned to both meet the needs of the project and retain a public area. A Library Assistant III was hired to recruit, train and supervise 7 FTE student clerks, and the actual validation process began with SRLF material (approximately 20% of the project) on May 1, 2005. UCSC became the first campus to send their deposits, and 3,850 UCSC volumes were received at the SRLF from a moving company in late June, 2005. A breakdown of projected campus contributions (by title):

UCB	3%
UCD	<1%
UCI	17%
UCLA	21%
UCR	2%
UCSB	3%
UCSC	26%
UCSD	27%

An early version of the UC/JSTOR database required by our contract to store validation data was evaluated and rejected, and a new database was created in-house by the SRLF programmer/analyst. This version meets the project needs 100%. A redelivery of pagination data from JSTOR forced a redesign of student workflow, which ultimately streamlined our process.

Goals and Strategies for 2005/06

Deposits:

- Process 225,000 new deposits, including 24,100 items for the UCL Shared Print Collection.
- Complete the Voyager documentation and training for the processing of map collections and Ethnomusicology Archive collections.

Circulation/Requests:

- Implement a new web-based application for SRLF management of Request. The new application will capture Call Slip requests (received through the OPAC) and build a database to manage print function, statistics, report writing, and the archiving of SRLF requests.

Digitization Services:

- Upgrade and expand scanning capabilities for document delivery and for preservation imaging projects. New scanners to be installed this year include the Konica Minolta PS5000c color scanner, and the ST-200AM microfilm scanner.

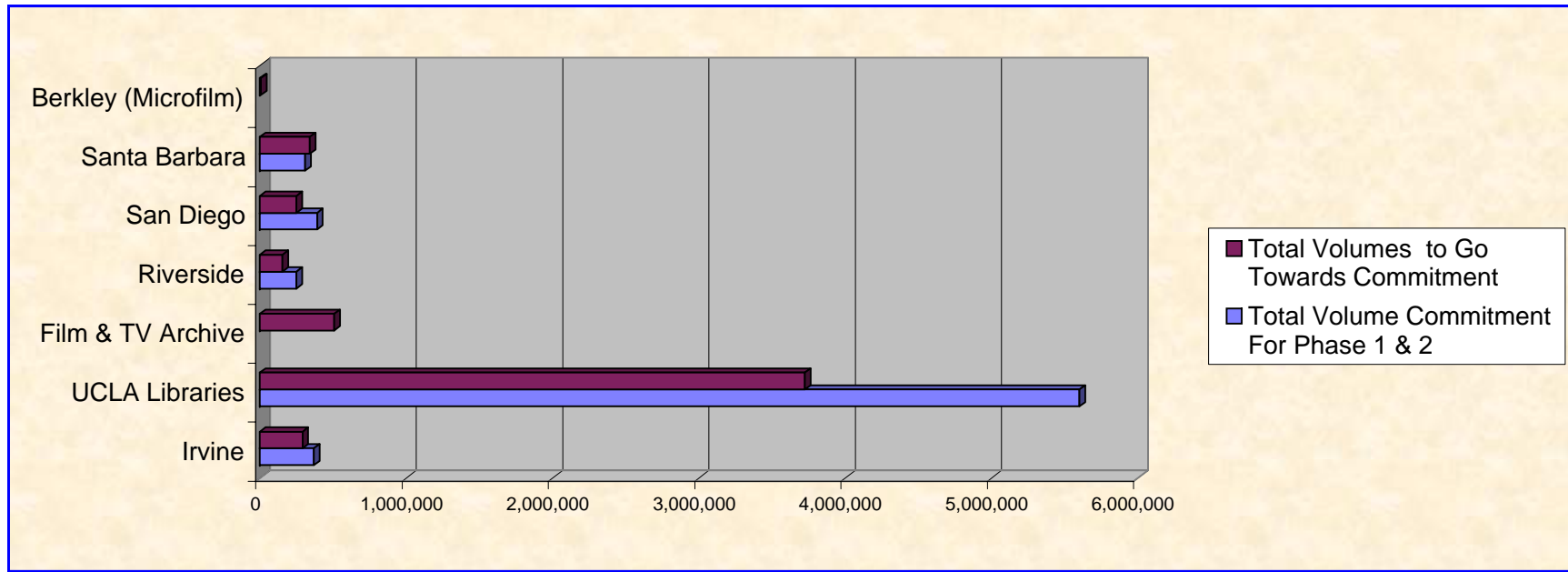
ILL Enhancements:

- Implement a new version of the UCLA Document Delivery service, moving from Wings to VDX.
- Manage all requests in VDX, whether initiated in VDX or OCLC.
- Implement Ariel 4.1 for document delivery requests.

JSTOR Project:

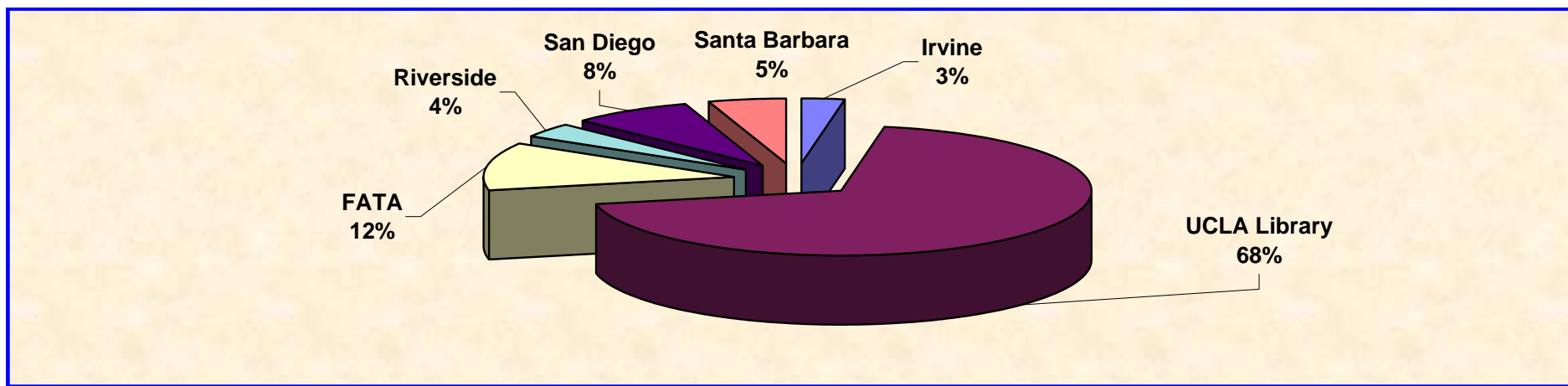
- Meet our quota of at least 650,000 validated pages per month
- Successfully pass an internal audit in September, 2005 with an error rate of less than 3%
- Continue receiving shipments from other UC campuses
- Compile and disseminate statistics for internal and external interest.

Campus Commitment Rates In Volume Equivalents As Of June 30, 2005



	A. Total Items Added as of 6/30/2005	B. Total Volume Equivalents Deposited	C. Total Volume Commitment For Phase 1 & 2	D. % of Total Commitment Deposited	F. Volumes Deaccessioned from SRLF	G. Total Volumes to Go Towards Commitment	H. % of Total Commitment Met
UCL Shared Print	35,758	35,758			0	35,758	
Irvine	282,295	291,086	370,000	78.67%	233	290,853	78.61%
LOS ANGELES							
UCLA Libraries	3,419,517	3,728,175	5,600,000	66.57%	4,574	3,723,601	
Film & TV Archive	329,515	507,189			160	507,029	
SUB TOTAL for Los Angeles	3,749,032	4,235,364	5,600,000	75.63%	4,734	4,230,630	75.55%
Riverside	148,888	155,324	250,000	62.13%	397	154,927	61.97%
San Diego	236,730	250,648	390,000	64.27%	257	250,391	64.20%
Santa Barbara	322,917	339,423	310,000	109.49%	610	338,813	109.29%
SUB TOTAL	4,739,862	5,271,845	6,920,000	76.18%	6,231	5,265,614	76.09%
Berkley (Microfilm)	20,786	6,060				6,060	
GRAND TOTAL	4,760,648	5,277,905	6,920,000	76.18%	6,231	5,271,674	76.18%

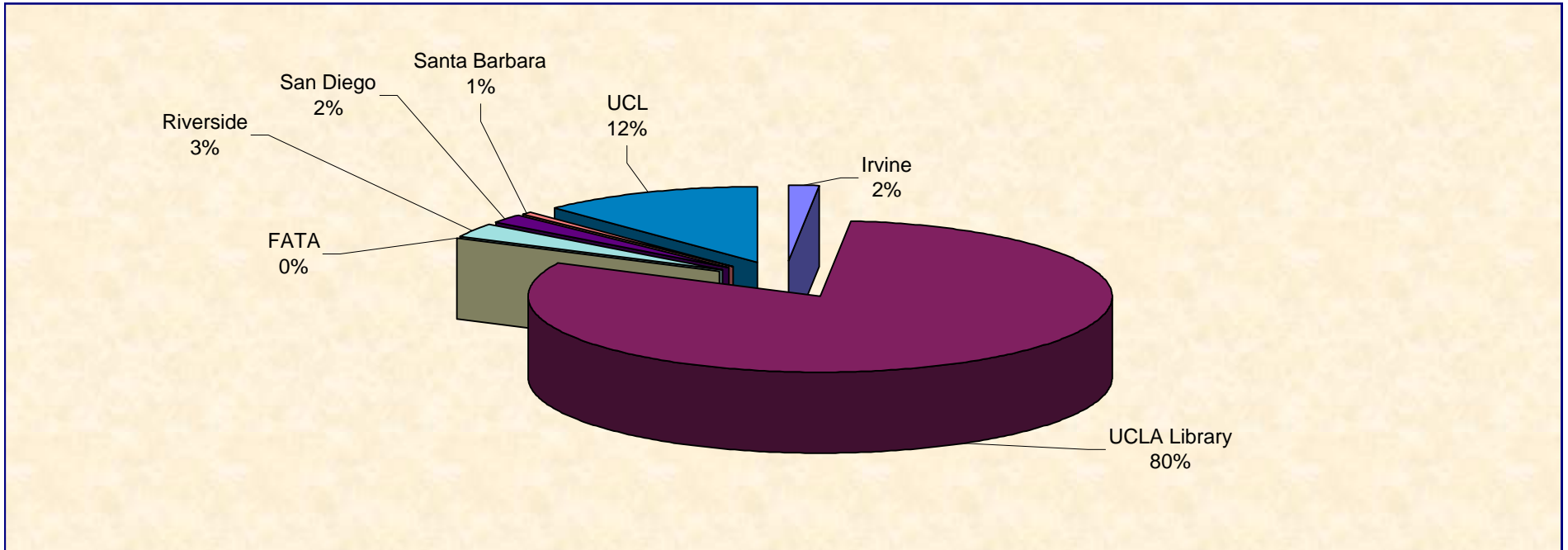
ITEMS RECEIVED JULY 2004 thru JUNE 2005



Number of Items Received

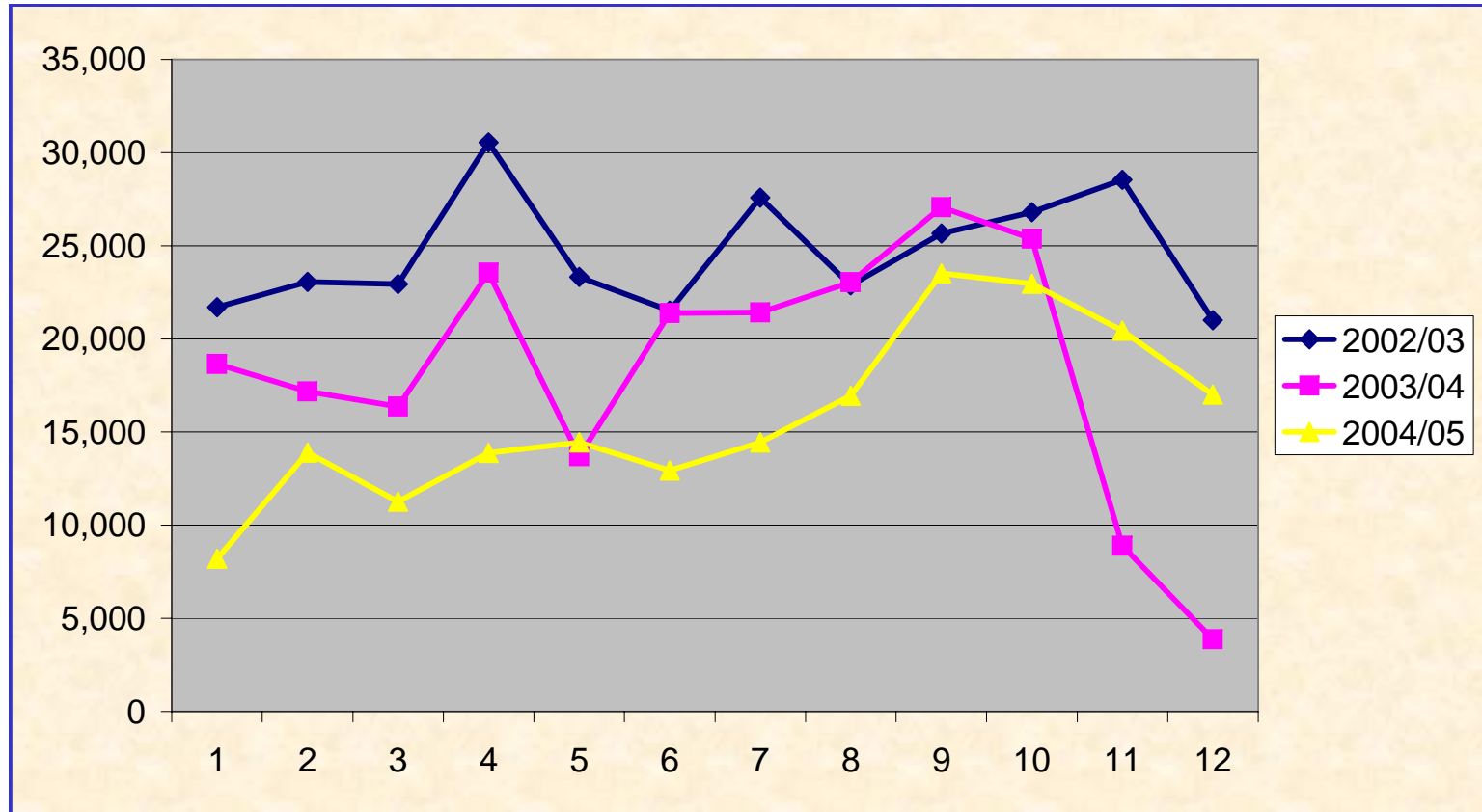
	Jul-04	Aug-04	Sep-04	Oct-04	Nov-04	Dec-04	Jan-05	Feb-05	Mar-05	Apr-05	May-05	Jun-05	To Date
Berkeley	99					107			60				266
Irvine				2,480						2,195			4,675
Los Angeles													
UCLA Library	214	5,237	10,938	11,145	10,215	9,589	9,796	15,241	14,125	10,629	11,640	6,829	115,598
FATA	3,914	4,626	1,222	993	1,998	852	739	1,032	1,310	118	1,967	1,157	19,928
Los Angels. Subtotal	4,128	9,863	12,160	12,138	12,213	10,441	10,535	16,273	15,435	10,747	13,607	7,986	135,526
Riverside				1,485	593		706	684	1,253	533	372	643	6,269
San Diego					2,485			3,155		4,214		3,256	13,110
Santa Barbara				1,885			1,746		2,027		2,525		8,183
UCL Shared Print				6,333	2,246	1,493	1,160	624	2,832	1,918	3,610	2,203	22,419
Deposits Received	4,128	9,863	12,160	24,321	17,537	11,934	14,147	20,736	21,547	19,607	20,114	14,088	190,448

U. C. Southern Regional Library Facility Items Added By Campus From July 2004 Thru June 2005



Items Added	Jul-04	Aug-04	Sep-04	Oct-04	Nov-04	Dec-04	Jan-05	Feb-05	Mar-05	Apr-05	May-05	Jun-05	2004/05 TOTAL	1987/04 TOTAL	GRAND TOTAL TO DATE
UCL		371	1,485	3,175	4,011	2,311	1,007	1,177	2,384	1,760	3,309	2,307	23,297	12,461	35,758
Irvine							287	288	337	394	1,574	462	3,342	278,953	282,295
Los Angeles															
UCLA Library	8,202	13,530	9,782	10,709	10,428	10,630	12,727	13,818	19,738	17,757	13,356	12,207	152,884	3,266,633	3,419,517
FATA													0	84,872	84,872
Los Angeles Sub-Total	8,202	13,530	9,782	10,709	10,428	10,630	12,727	13,818	19,738	17,757	13,356	12,207	152,884	3,182,760	3,504,389
Riverside							140	305	310	2,705	1,329	1,040	5,829	143,059	148,888
San Diego							132	1,223	482	123	459	976	3,395	233,335	236,730
Santa Barbara							154	128	264	215	417	21	1,199	321,718	322,917
Total	8,202	13,901	11,267	13,884	14,439	12,941	14,447	16,939	23,515	22,954	20,444	17,013	189,946	4,172,286	4,530,977

ITEMS ADDED JULY 2002 thru JUNE 2005



Added	JUL	AUG	SEP	OCT	NOV	DEC	JAN	FEB	MAR	APR	MAY	JUN	TOTAL
2002/03	21,699	23,056	22,934	30,552	23,318	21,511	27,572	22,883	25,652	26,809	28,534	21,000	295,520
2003/04	18,655	17,169	16,363	23,560	13,694	21,381	21,410	23,045	27,070	25,376	8,903	3,874	295,520
2004/05	8,202	13,901	11,267	13,884	14,439	12,941	14,447	16,939	23,515	22,954	20,444	17,013	189,946
Total	40,354	40,225	39,297	54,112	37,012	42,892	48,982	45,928	52,722	52,185	37,437	24,874	780,986

U. C Southern Regional Library Facility
Selected Statistics July 2004 Thru June 2005
Processing Statistics

DEACCESSIONED ITEMS

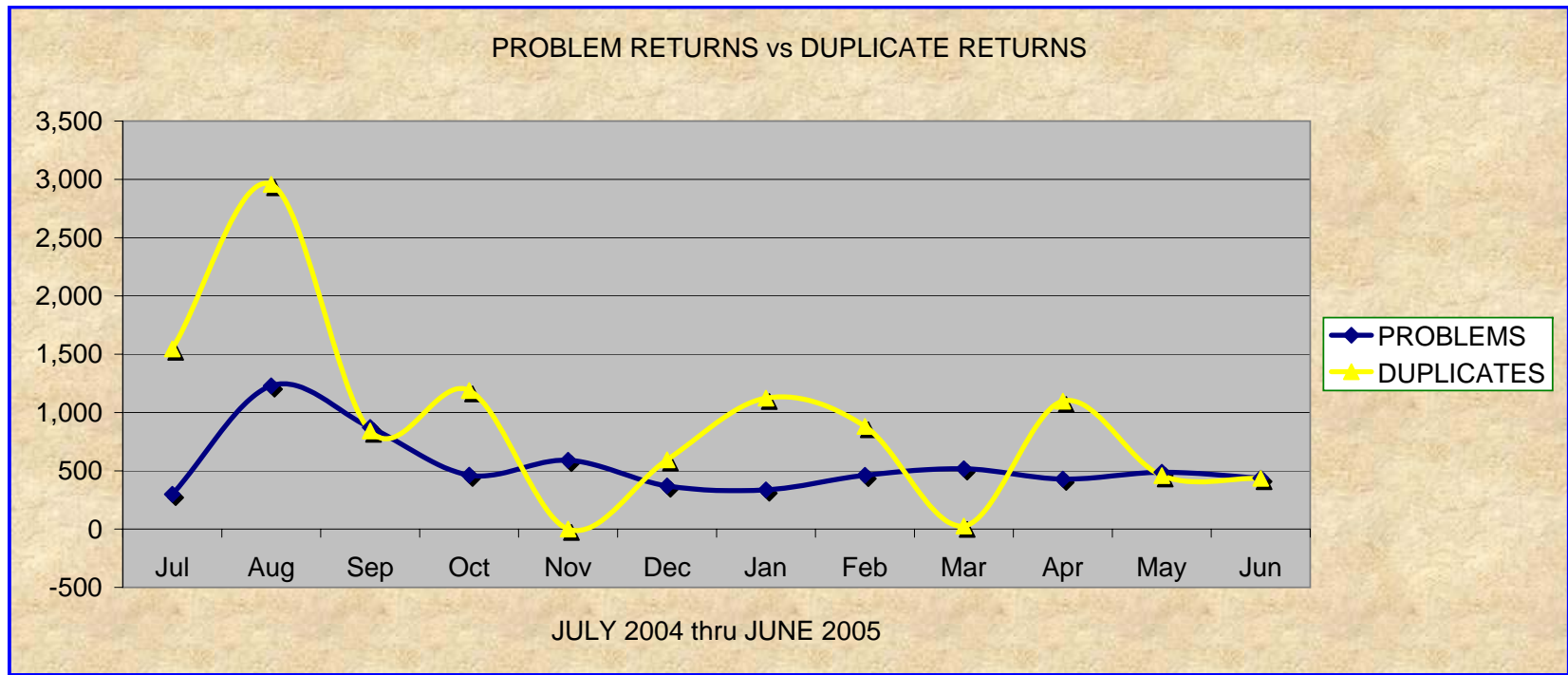
	Jul 2004	Aug 2004	Sep 2004	Oct 2004	Nov 2004	Dec 2004	Jan 2005	Feb 2005	Mar 2005	Apr 2005	May 2005	Jun 2005	2004/05 TOTAL	1987/2003 TOTAL	GRAND TOTAL TO DATE
IRVINE													0	233	233
LOS ANGELES	96	207	1				335		70		1		710	3,622	4,332
RIVERSIDE			17				1			56			74	332	406
SAN DIEGO													0	548	548
SANTA BARBARA	63	44						23	2		2		134	504	638
TOTAL	159	251	18	0	0	0	336	23	72	56	3	0	918	5,239	6,157

PROCESSING PROBLEMS, EXCLUDING DUPLICATES, REPORTED TO
DEPOSITING CAMPUS FOR RESOLUTION JULY 2004 THRU JUNE 2005 (Title Count)

	Jul 2004	Aug 2004	Sep 2004	Oct 2004	Nov 2004	Dec 2004	Jan 2005	Feb 2005	Mar 2005	Apr 2005	May 2005	Jun 2005	2004/05 TOTAL	
IRVINE											10		10	
LOS ANGELES	299	1,229	872	463	591	369	335	461	507	396	456	426	6,404	
RIVERSIDE							1		10	31	20	1	63	
SAN DIEGO						2				1	1	6	10	
SANTA BARBARA										1		4	5	
TOTAL	299	1,229	872	463	591	371	336	461	517	429	487	437	6,492	

DUPLICATE ITEMS RETURNED TO CAMPUSES
FOR RESOLUTION JULY 2004 THRU JUNE 2005

	Jul 2004	Aug 2004	Sep 2004	Oct 2004	Nov 2004	Dec 2004	Jan 2005	Feb 2005	Mar 2005	Apr 2005	May 2005	Jun 2005	2004/05 TOTAL	PROBLEMS & DUPS 2004/05 GRAND TOTAL	PROBLEMS & DUPS 1987/2004 TOTAL	GRAND TOTAL TO DATE
IRVINE													0	10	6,278	6,288
LOS ANGELES	1,546	2,957	842	1,188		595	1,085	881		998	358	303	10,753	17,157	130,767	147,924
RIVERSIDE							39		25	99	101	35	299	362	4,100	4,462
SAN DIEGO									1			97	98	108	16,078	16,186
SANTA BARBARA								1					1	6	13,309	13,315
TOTAL	1,546	2,957	842	1,188	0	595	1,124	881	27	1,097	459	435	11,151	17,643	170,532	188,175
GRAND TOTAL	1,845	4,186	1,714	1,651	591	966	1,460	1,342	544	1,526	946	872	17,643		170,532	188,175



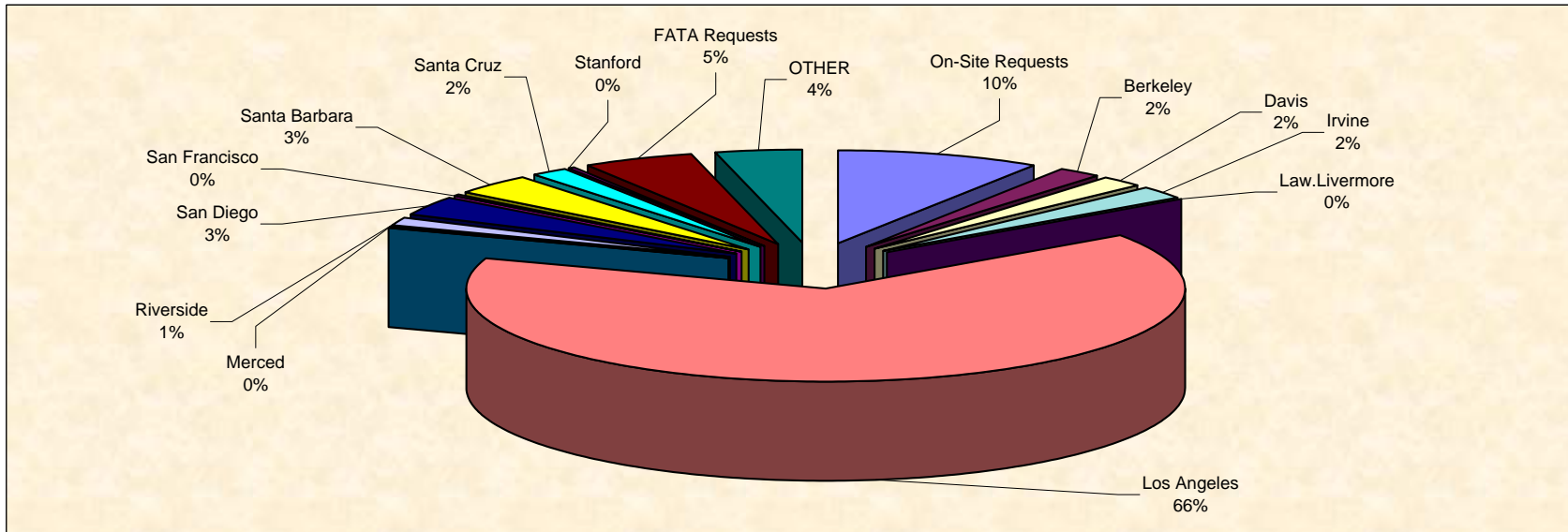
PROCESSING PROBLEMS, EXCLUDING DUPLICATES, REPORTED TO DEPOSITING CAMPUS FOR RESOLUTION (Title Count)

	Jul 2004	Aug 2004	Sep 2004	Oct 2004	Nov 2004	Dec 2004	Jan 2005	Feb 2005	Mar 2005	Apr 2005	May 2005	Jun 2005	2004/05 TOTAL
IRVINE	0	0	0	0	0	0	0	0	0	0	10	0	10
LOS ANGELES	299	1,229	872	463	591	369	335	461	507	396	456	426	6,404
RIVERSIDE	0	0	0	0	0	0	1	0	10	31	20	1	63
SAN DIEGO	0	0	0	0	0	2	0	0	0	1	1	6	10
SANTA BARBARA	0	0	0	0	0	0	0	0	0	1	0	4	5
TOTAL	299	1,229	872	463	591	371	336	461	517	429	487	437	6,492

DUPLICATE ITEMS RETURNED TO CAMPUSES FOR RESOLUTION JULY 2004 THRU JUNE 2005

	Jul 2004	Aug 2004	Sep 2004	Oct 2004	Nov 2004	Dec 2004	Jan 2005	Feb 2005	Mar 2005	Apr 2005	May 2005	Jun 2005	2004/05 TOTAL	PROBLEMS & DUPS 2004/05 GRAND TOTAL	PROBLEMS & DUPS 1987/2004 TOTAL	GRAND TOTAL TO DATE
IRVINE	0	0	0	0	0	0	0	0	0	0	0	0	0	10	6,278	6,288
LOS ANGELES	1546	2957	842	1188	0	595	1085	881	0	998	358	303	10,753	17,157	125,031	142,188
RIVERSIDE	0	0	0	0	0	0	39	0	25	99	101	35	299	362	4,101	4,463
SAN DIEGO	0	0	0	0	0	0	0	0	1	0	0	97	98	108	15,927	16,035
SANTA BARBARA	0	0	0	0	0	0	0	0	1	0	0	0	1	6	11,959	11,965
TOTAL	1546	2957	842	1188	0	595	1124	881	27	1097	459	435	11,151	17,643	163,296	180,939
GRAND TOTAL	1,845	4,186	1,714	1,651	591	966	1,460	1,342	544	1,526	946	872	17,643		163,296	180,939

PAGING REQUESTS JULY 2004 thru JUNE 2005

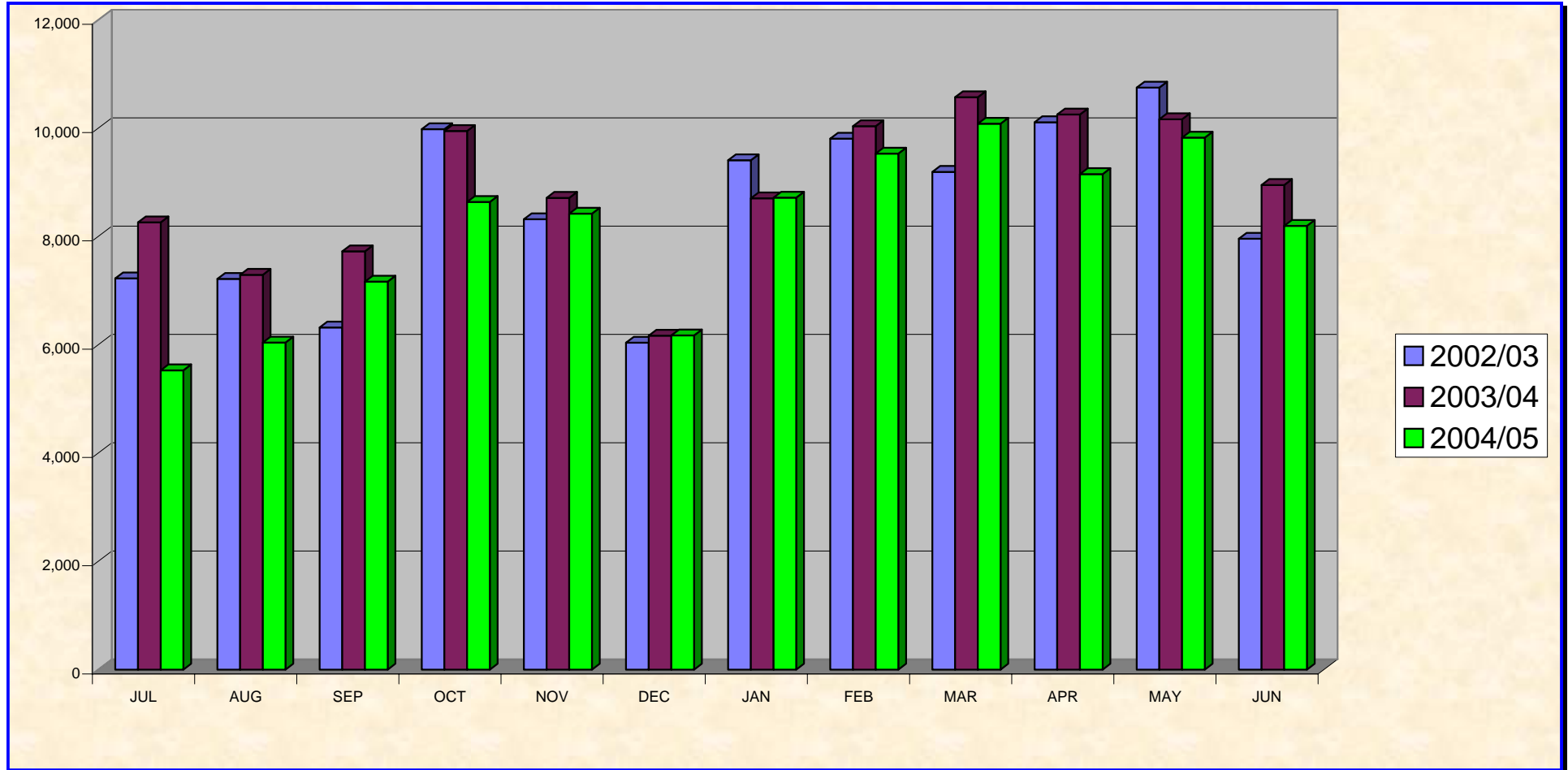


	Jul-04	Aug-04	Sep-04	Oct-04	Nov-04	Dec-04	Jan-05	Feb-05	Mar-05	Apr-05	May-05	Jun-05	To Date
On-Site Requests	594	672	823	647	857	778	746	719	846	853	634	894	9,063

Origin of Paging Requests

	Jul-04	Aug-04	Sep-04	Oct-04	Nov-04	Dec-04	Jan-05	Feb-05	Mar-05	Apr-05	May-05	Jun-05	To Date
Berkeley	108	81	134	218	162	81	83	255	239	146	109	44	1,660
Davis	114	136	90	292	188	151	181	166	128	176	182	168	1,972
Irvine	157	131	113	283	141	144	117	146	263	193	249	184	2,121
Law.Livermore	0	2	0	2	0	1	0	0	0	0	0	0	5
Los Angeles	3,184	3,629	4,537	5,112	5,712	3,916	5,548	6,414	7,073	5,936	6,933	5,522	63,516
Merced	0	0	0	0	0	0	0	0	5	21	16	7	49
Riverside	122	96	89	176	77	95	122	161	176	135	150	46	1,445
San Diego	202	220	158	330	212	195	395	354	281	424	318	225	3,314
San Francisco	40	36	26	22	22	39	30	32	24	35	40	20	366
Santa Barbara	164	206	217	332	234	201	465	316	281	338	331	254	3,339
Santa Cruz	80	83	83	175	125	91	281	163	110	194	136	120	1,641
Stanford	25	29	14	49	12	8	10	30	38	25	17	9	266
SUB TOTAL	4,196	4,649	5,461	6,991	6,885	4,922	7,232	8,037	8,618	7,623	8,481	6,599	79,694
FATA Requests	351	368	451	454	258	192	452	590	306	464	482	572	4,940
OTHER	386	351	431	544	421	280	286	183	312	211	227	129	3,761
GRAND TOTAL	5,527	6,040	7,166	8,636	8,421	6,172	8,716	9,529	10,082	9,151	9,824	8,194	97,458

PAGING REQUESTS JULY 2002 thru JUNE 2005



	JUL	AUG	SEP	OCT	NOV	DEC	JAN	FEB	MAR	APR	MAY	JUN	TOTAL
2002/03	7,226	7,216	6,318	9,980	8,318	6,037	9,406	9,805	9,192	10,109	10,748	7,957	102,312
2003/04	8,260	7,291	7,725	9,947	8,712	6,166	8,703	10,036	10,571	10,252	10,164	8,950	106,777
2004/05	5,527	6,040	7,166	8,636	8,421	6,172	8,716	9,529	10,082	9,151	9,824	8,194	97,458
TOTAL	21,013	20,547	21,209	28,563	25,451	18,375	26,825	29,370	29,845	29,512	30,736	25,101	306,547

RELAIS & PHOTOCOPY

Requests Filled by Web Delivery

Direct to Patron (Relais)

	Jul-04	Aug-04	Sep-04	Oct-04	Nov-04	Dec-04	Jan-05	Feb-05	Mar-05	Apr-05	May-05	Jun-05	To Date
Berkeley	10	4	6	5	5	1	6	14	16	18	7	6	98
Claremont	19	15	12	22	36	18	11	10	12	11	4	8	178
Davis	8	27	17	14	27	8	8	16	14	17	26	25	207
Irvine	13	8	4	7	10	4	0	12	22	9	13	35	137
Los Angeles	12	5	4	3	6	6	3	1	1	3	4	5	53
Merced	0	0	0	0	0	0	0	0	2	6	7	1	16
Riverside	15	24	10	24	12	7	6	27	28	12	28	8	201
San Francisco	6	9	11	1	8	17	9	5	7	11	10	9	103
San Diego	9	20	18	10	23	7	20	25	24	34	31	23	244
Santa Barbara	16	38	42	16	28	17	28	34	37	34	51	36	377
Santa Cruz	20	9	8	3	7	6	5	10	22	12	18	22	142
Other	2	0	6	3	0	6	0	1	5	1	0	9	33
Total	130	159	138	108	162	97	96	155	190	168	199	187	1,789

Requests Filled by NON Web Delivery

(Ariel for UCB, UCD, and Other

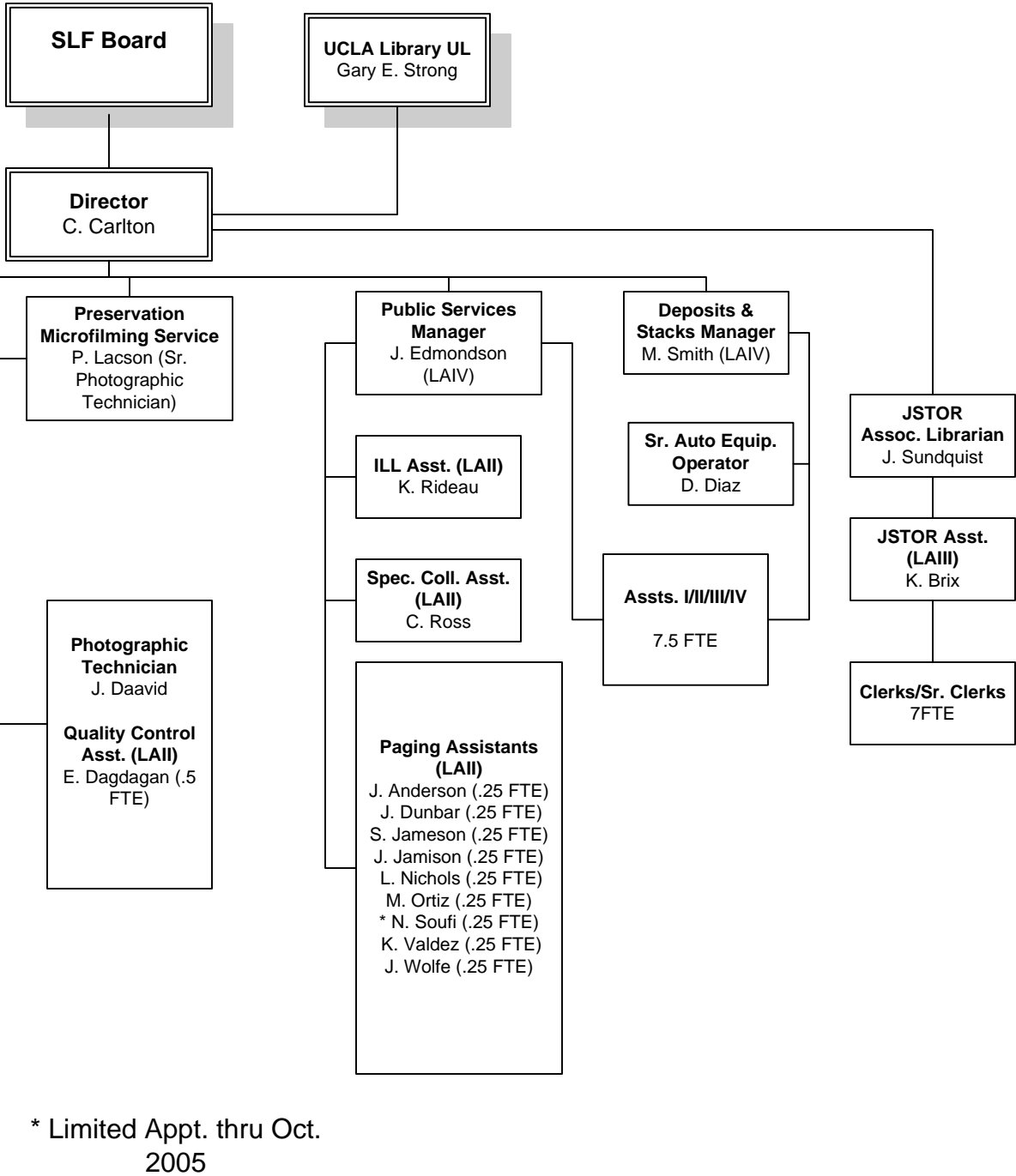
Relais for everyone else)

	Jul-04	Aug-04	Sep-04	Oct-04	Nov-04	Dec-04	Jan-05	Feb-05	Mar-05	Apr-05	May-05	Jun-05	To Date
Berkeley	7	4	5	3	5	2	1	4	3	6	1	0	41
Bodega Bay	0	0	0	0	10	0	0	0	0	0	0	0	10
Cal Tech	1	1	0	4	3	0	2	5	3	1	1	0	21
Cedars Sinai	1	0	0	0	0	0	0	0	0	0	0	0	1
Claremont	0	0	0	0	0	0	1	0	0	0	0	0	1
Davis	1	2	2	0	7	2	1	2	3	5	8	1	34
Irvine	4	8	1	14	7	2	1	4	7	4	9	1	62
Law.Livermore	0	0	0	0	1	0	0	0	0	0	0	0	1
Loyola	2	1	0	3	6	2	0	0	0	0	0	0	14
Riverside	7	6	5	3	1	0	1	4	5	3	9	3	47
San Francisco	13	8	5	1	2	2	5	4	3	3	2	1	49
San Diego	24	14	8	9	5	6	6	14	5	2	5	2	100
Santa Barbara	1	1	6	1	6	2	0	1	5	1	5	1	30
Santa Cruz	0	0	1	6	2	2	3	0	0	1	0	0	15
Stanford	1	0	0	2	0	0	0	0	3	2	1	0	9
UCLA Harbor	0	1	0	4	3	2	3	0	1	1	0	0	15
USC	1	2	0	0	2	0	1	0	1	0	3	0	10
Other	13	12	8	13	18	10	8	13	32	25	0	0	152
Total	76	60	41	63	78	32	33	51	71	54	44	9	612

Requests Filled by Photocopy

	Jul-04	Aug-04	Sep-04	Oct-04	Nov-04	Dec-04	Jan-05	Feb-05	Mar-05	Apr-05	May-05	Jun-05	To Date
Berkeley	0	0	0	0	0	0	0	0	0	0	0	0	0
Cal Tech	0	0	0	0	0	0	0	0	0	0	0	0	0
Claremont	0	0	2	0	0	0	0	0	0	0	0	1	3
Davis	0	0	0	0	0	0	0	0	0	1	0	0	1
Irvine	0	0	0	0	0	0	0	0	0	0	0	1	1
Law.Livermore	0	0	0	0	0	0	0	0	0	0	0	0	0
Los Angeles	0	0	0	0	0	0	0	0	0	0	0	5	5
Riverside	0	0	0	0	0	0	0	0	0	0	0	0	0
San Francisco	0	0	0	0	0	0	0	0	0	0	0	0	0
San Diego	0	0	0	0	0	0	0	0	0	0	0	0	0
Santa Barbara	0	0	0	0	0	0	0	0	0	0	0	0	0
Santa Cruz	0	0	0	0	0	0	0	0	0	0	0	0	0
Stanford	0	0	0	0	0	0	0	0	0	0	0	0	0
USC	0	0	0	0	0	0	0	0	0	0	0	0	0
Other	0	0	1	8	1	11	4	3	1	3	2	2	36
Photocopies Sent	0	0	3	8	1	11	4	3	1	4	2	9	46

University of California
 Southern Regional Library Facility
 2004/05



* Limited Appt. thru Oct.
 2005