
**UC
SOUTHERN
REGIONAL
LIBRARY
FACILITY**

2011/12 ANNUAL REPORT

SIGNIFICANT EVENTS AND ACCOMPLISHMENTS 2011/12

Transform the Collection by continuing to build shared collections, by expanding preservation reformatting services, and by providing excellent management of the database systems for collection inventory control and report capabilities.

- New Deposits: in 2011/12, the SRLF received 199,714 new items, including a total of 30,536 extra deposits (above allocations) from UCSB, UCSD, and the UCL Shared Print Collections.
- New items added to the collections in 2011/12 totaled 151,680.

UCI Libraries	2,519	1%
UCLA Libraries	80,330	52%
UCLA Film & Television Archive	0	0
UCR Libraries	5,672	4%
UCSD Libraries	18,908	12%
UCSB Libraries	8,239	5%
UCL Shared Print Collection	30,140	19%
UC JSTOR Archive	4,622	3%
WEST Shared Print Archive	5,872	4%

- In 2010/11 the SRLF launched a project to weed duplicate copies from the circulating collections in an effort to reclaim shelf space for incoming deposits. Duplicate journal volumes are pulled from the stacks, the volumes are reviewed and the best-condition copy is retained. The discard volumes are paired with incoming volumes of like size, and processing staff transfer the item barcode from the discard to the new item. Continuing the de-duplication effort in 2011/12, 5,926 duplicate journal volumes were removed from the SRLF, with the open shelf space immediately re-occupied with incoming deposits. This weeding effort will continue in 2012/13.

- Together with UCLA's Print Acquisitions Manager and the CDL Shared Print Manager, SRLF managers completed the transfer and implementation of UCL Shared Print acquisitions functions from Print Acquisitions to the SRLF, effectively eliminating redundant handling and processing of the shared print journal collection.
- Paging and ILL requests totaled 104,357, a decrease of 8% from the previous year. The reduction in paging and ILL workloads continues a trend that began in 2009/10. SRLF filled 6,077 document delivery requests electronically, either direct to the patron via the Web or to the requesting libraries via Ariel.
- ILL requests from UC and non-UC libraries decreased from the previous year, with the more significant decrease coming from UC libraries. Non-UC requests now represent more than 48% of the SRLF's ILL workload. In March, the SRLF became a member of SHARES, a cooperative ILL exchange program that provides fast, lower-cost services to member libraries. The SRLF is participating on a trial basis, and will evaluate the SHARES workload in late 2012 to determine if the revenue coming in for SHARES requests is adequately covering SRLF's costs to provide ILL service at the lower SHARES rate.
- SRLF Preservation Imaging continued to serve the UC needs for preservation reformatting of library collections. The preservation microfilming workload increased by 56% over the previous year, with completion of the annual orders from UCI and UCSD to microfilm locally-published newspapers and the order from Japan's National Diet Library. SRLF continues to host the Stokes digitization equipment, with funding for staff resources provided by the UCLA Library.

Preservation imaging statistics for 2011/12 include the following:

Microfilm images filmed (frames)	36,931
Microfilm reels produced	252
Digital scanning images captured	12,966
Microfilm-to-digital images scanned	59,000

- JSTOR Phase 5, with 345 distinct new titles and circa 4.5 million pages of content, occupied team members throughout the year. Titles began arriving from UC campuses in September 2011, and by the end of June 2012 3.15 million pages had been validated and 8,382 volumes had been added to the Archive. Together with Phases 1-4 titles, the JSTOR Team has validated a grand total of 37 million pages and compiled a print archive of 66,284 volumes. In 2011/12 additional progress was made on acquiring volumes that have appeared on the SRLF/JSTOR Wish List. The Wish List contains titles and volumes that are missing from the Archive and for which the team could not find acceptable copies within the UC Library collections. The UC/JSTOR Wish List was distributed to Western Regional Storage

Trust (WEST) member libraries in the Spring of 2012, and the SRLF team received positive responses from several libraries outside the UC system.

The JSTOR Project successfully passed its fifth audit in March 2012 with an audit score of 99.96% accuracy.

- Participation in WEST- Cycle 1 Archive Building: SRLF served as one of five Archive Builder locations, along with UC Northern Regional Library Facility, Stanford University, Arizona State University, and University of Oregon. Between July and November 2011 SRLF's WEST Coordinator Tin Tran spent considerable time reviewing the WEST Bronze and Gold journal family lists that had been assigned to SRLF, identifying the locations and holdings for those journal families. In coordination with the OCLC Shared Print Disclosure Pilot, staff completed the 583 disclosure and retention statements for all the Bronze titles and many of the Gold titles by March 2012. Work on disclosures and validation of the Gold titles continued through May, and on May 28 a complete extract of the WEST Bronze and Gold holdings at the SRLF was produced for the Print Archive Preservation Registry (PAPR). In total, the SRLF committed 8,349 volumes to WEST Bronze and 6,403 volumes to WEST Gold during Cycle 1.
- Participation in the OCLC Shared Print Disclosure Pilot: Launched in June 2011, SRLF staff participated in conference calls to review the evolving guidelines and standards for the 583 fields that would be used to disclose retention commitments, completeness, and condition statements for shared print archives. SRLF staff also participated in Pilot working groups to 1) test the batch load process for LHRs (local holdings records with shared print 583 disclosure statements), and 2) tests of the new OCLC shared print symbols in resource sharing requests. Batch loads of the WEST Bronze and Gold titles held at the SRLF were extracted from Voyager and sent to OCLC in March 2012. The resource sharing tests were conducted in early April 2012. The final report of the OCLC Shared Print Disclosure Pilot was issued by OCLC at the end of April 2012.
- Technology and network support activities during the year included the successful migration to Windows 7 and Office 2010 in November 2011. In anticipation of that migration, extensive testing was completed beforehand and the macros that are used in SRLF processing and circulation functions were completely rewritten for Windows 7.

Make Specialized Collections Accessible through digitization projects, and continue to explore options and solutions for preserving and servicing the newspaper collection.

- Preservation Imaging staff focused their efforts on digitization of UCLA Library Special Collections' manuscript and photographic collections, with emphasis on the Minasian manuscripts and Armenian correspondence, the Arkatov photograph collection, and portions of "Collecting Los Angeles" and the Meso-America collections. SRLF's Preservation Imaging staff also completed the digital preservation of Deutsches Nachrichtenburo, an internal serials publication that was issued daily by the German News Agency during the Third Reich. UCLA Library's holdings of this rare title had become very brittle, and with support and collaboration from UCLA Library's Preservation staff, selectors, Cataloging/Metadata staff and Digital Library, scanning of the 9,000+ pages of content was completed in June 2012.
- Newspaper Bundles Review and Discard Project: collaboration continued with the UCLA Preservation Officer, with Print Acquisitions staff, and with the Center for Research Libraries (CRL) to identify newspaper holdings that can be transferred to CRL. We are awaiting the decision list from CRL on titles that will be accepted into the CRL program. SRLF and UCLA Library holdings of newspapers published in California will be consolidated at the SRLF for permanent retention. Those efforts will begin once CRL-accepted titles are pulled and shipped to the CRL facility.

Enhance Learning Spaces with improvements to physical and virtual spaces.

- In collaboration with colleagues at the NRLF, a survey of the remaining spaces in NRLF and SRLF was completed in early 2012. A report was prepared for the University Librarians, identifying the projected fill dates for each Facility. The report also included recommendations on campus deposit allocations for 2013-2017, and a recommendation to proceed with de-duplication of journal titles held at the RLFs. Based on current rates of deposit, the SRLF will reach full capacity for circulating monographs and journals in mid to late 2013. However, the UCLA Film & Television Archive (FATA) is expected to relocate their holdings currently at SRLF to a new facility in early 2014. With careful management of deposits through 2013 followed by the exit of FATA in early 2014, the SRLF should be able to provide uninterrupted service and storage for the UC Libraries at least until 2016/17.
- In September 2011 UCLA Capital Programs initiated a search for an Executive Architect firm for SRLF Phase 3 conceptual planning (pre-design study). The successful bid went to Pfeifer Partners Architects. Representing the UCLA Library and the SRLF in pre-design study were UL Gary Strong, DUL Susan Parker, AUL for Collections & Scholarly Communication Sharon Farb, Preservation Officer Jake Nadal, and SRLF Director Colleen Carlton.

A series of planning workshops began on December 16, 2011 followed by a detailed tour of the SRLF for the architects and consultants in January 2012. In total, five workshops were held at UCLA Capital Programs Building between December 16, 2011 and March 13, 2012. The Concept Feasibility and Programming Study Report was issued to the UCLA Chancellor by Pfeiffer Partners Architects on May 11, 2012.

GOALS AND STRATEGIES FOR 2012/13

- ***Build and Enhance Research Collections... continue efforts to build shared collections at the SRLF.***
 - Building shared collections: RLF persistent deposits; UC Shared Print programs; JSTOR Print Archive; WEST Bronze, Silver, and Gold archives. Support current annual allocations for the UC campuses and continue partnerships with JSTOR (ca. 4 million pages in 8,300 volumes) and WEST (Bronze, Silver, and Gold titles with estimated volumes of 22,000 at SRLF). Continue effort to fill JSTOR and WEST Archive gaps, with outreach to non-UC Libraries.
 - Maintain staff resources at the levels necessary to receive and process 127,000 annual deposits from the UC Libraries, 8,300 volumes for the UC/JSTOR Archive, 22,400 new issues of Shared Print for Licensed Content, and ca. 22,000 volumes for the WEST Bronze, Silver and Gold archives.
 - Support preservation imaging and digital reformatting services at the SRLF with adequate staff resources and variety of equipment and software programs to handle print and non-print formats.
 - Continue collaborations with Print Acquisitions and Preservation staff to transfer newspaper holdings to CRL. Develop workflow and procedures for those titles that will remain in the UCLA/SRLF collections.
 - Incorporate continuous process improvement. Working together with UCLA Library units, share ideas and explore options for improving workflows within technical processing, resource sharing, shared print programs, and the preservation imaging programs. Coordinate SRLF process improvements with the efforts of UCLA Print Acquisitions, Cataloging/Metadata, Scholarly Communication and Licensing, and Preservation.

➤ ***Transform Research Services ... explore team approach to research support and build tools, procedures, and expertise to develop, manage, and share resources.***

- Collaborate with UCLA departments to identify collections for digitization: Print Acquisitions, Cataloging/Metadata, LSC, DL, and SRLF work together to establish efficient workflows; prioritize the projects for digitization; adhere to standards for quality and improved discovery. When the legacy print materials are requested for use, ensure quick retrieval and safe delivery of the items to LSC.
- Enhance and expand existing web-based applications and databases at SRLF; provide access to these tools and resources via the SRLF intranet or internet site; explore options for sharing the applications or modeling those applications with other collections management units.
- Continue collaboration with Print Acquisitions and Preservation staff to transfer UCLA newspaper holdings that are held at the SRLF to CRL. For select titles that will remain at the SRLF, explore options for local digital reformatting and preservation.

➤ ***Focus on Teaching and Learning ... through improved discovery and access to the collections.***

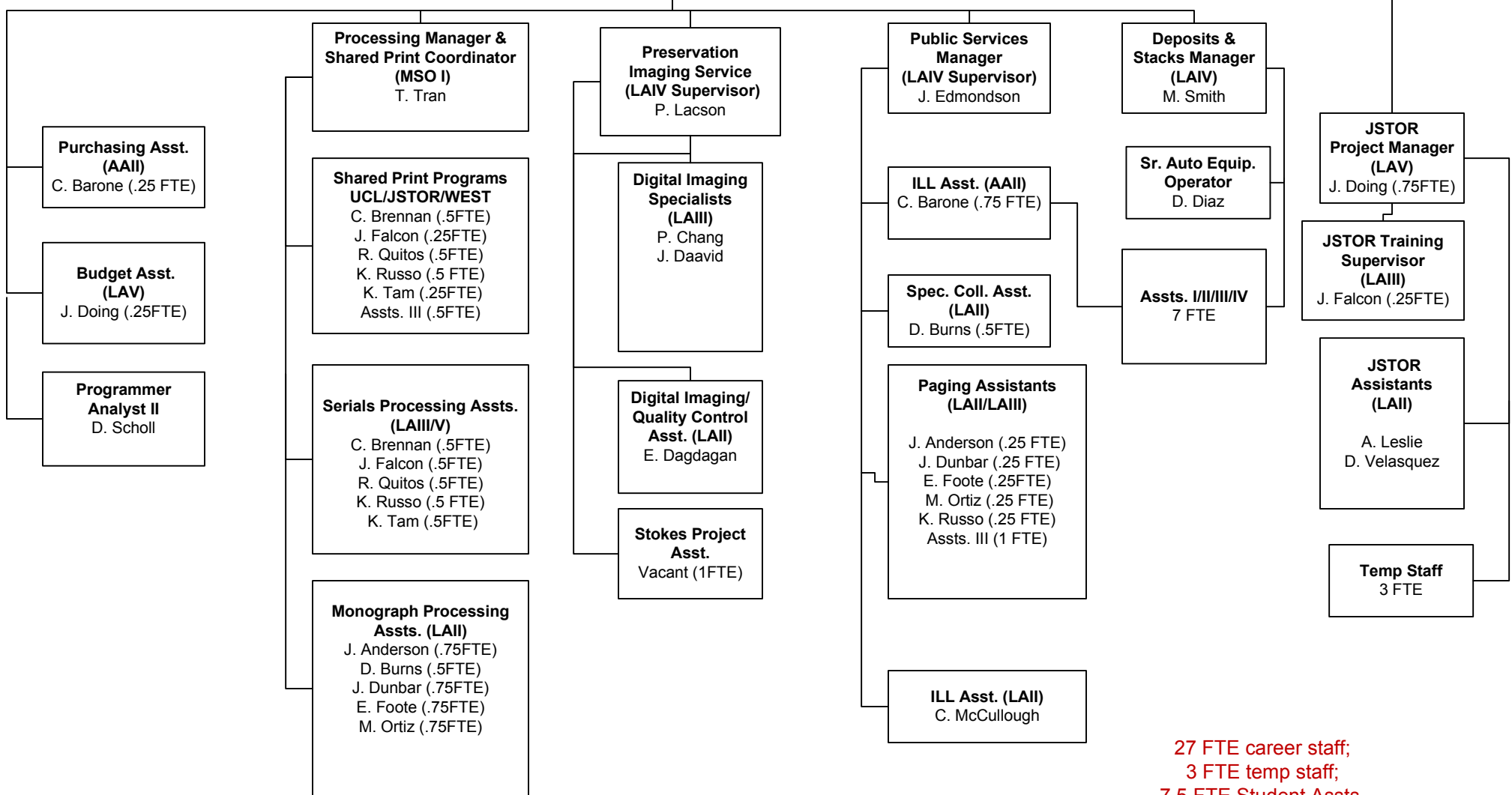
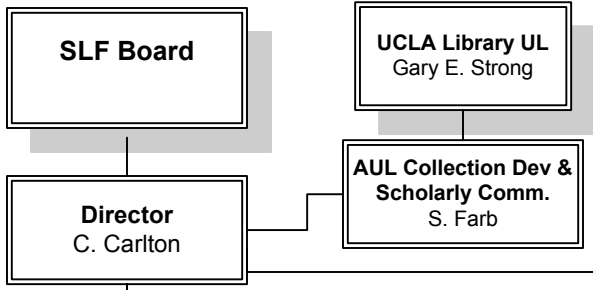
- To ensure discovery and access, accurately record SRLF holdings in local and WorldCat systems; respond quickly to resource sharing requests; provide digital reformatting services where appropriate.
- Upgrade the SRLF websites for improved design elements and for compatibility with mobile devices.

➤ ***Reconceptualize the Library as Place ... identify and provide additional capacity to support growth and changing needs, both in usage and in collections.***

- Expand existing storage capacity at the SRLF for the UC Libraries print collections, which in turn allows libraries to downsize their on-site print collections and reconfigure spaces for teaching and learning. This will be possible through:

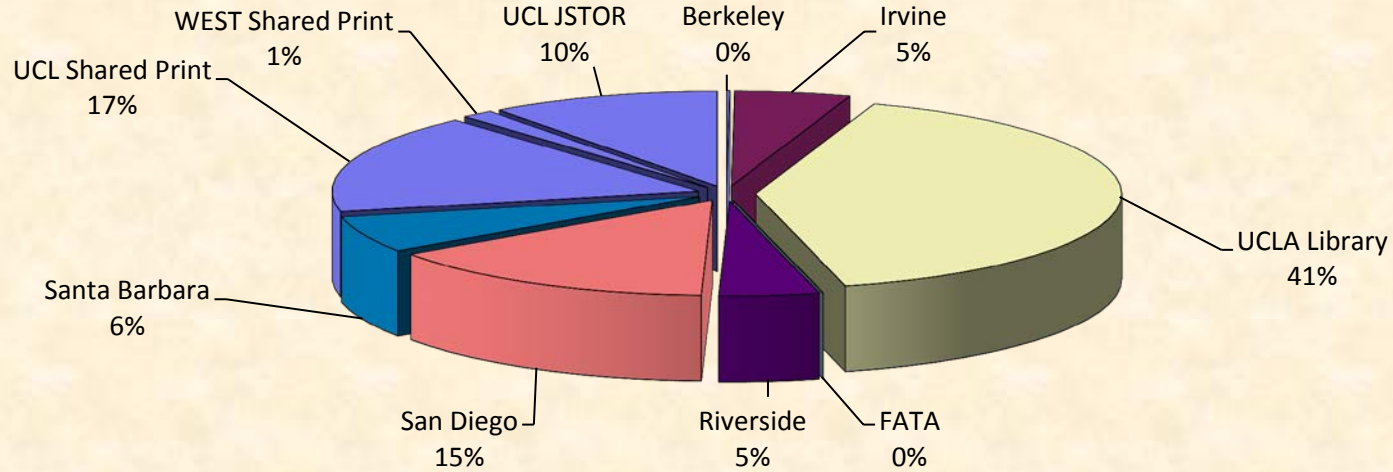
- Careful de-selection of duplicate journal holdings where other trusted shared print archives exist (JSTOR, WEST Libraries; de-duplication across the UC RLFs);
 - Preparation to reclaim space as UCLA Film & Television Archive collections are moved to a new facility in Santa Clarita (2013/14); meanwhile shift FATA items as necessary to accommodate incoming UC Libraries material.
- Work with UCLA Library and Capital Programs to secure approval and funding for SRLF Phase 3.
 - Explore new or enhanced document delivery service to UCLA users that mirror existing service to other UC campuses. Identify costs and staff resources needed at the SRLF for extending this service to UCLA Library users; define limits on what collections might be available for library subsidized no-fee document delivery (example: shared print journal archives).

University of California
 Southern Regional Library Facility
 Org Chart June 2012



27 FTE career staff;
 3 FTE temp staff;
 7.5 FTE Student Assts.

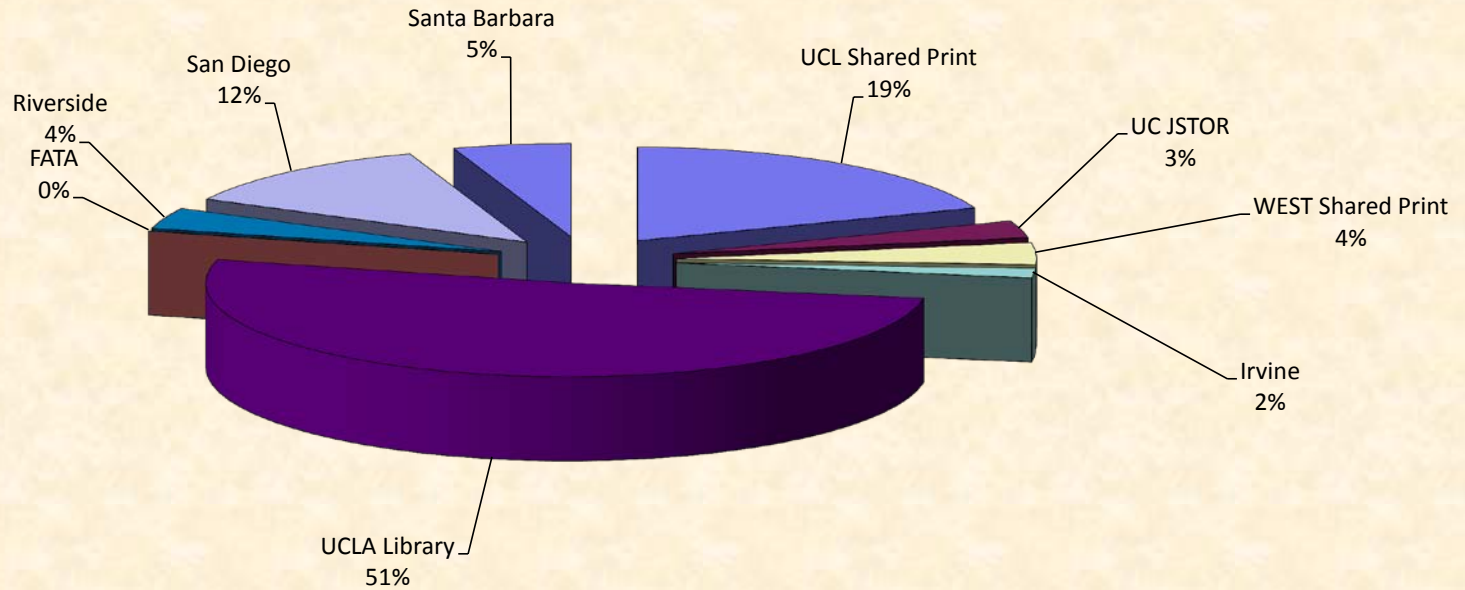
**ITEMS RECEIVED
JULY 2011 thru JUNE 2012**



Number of Items Received

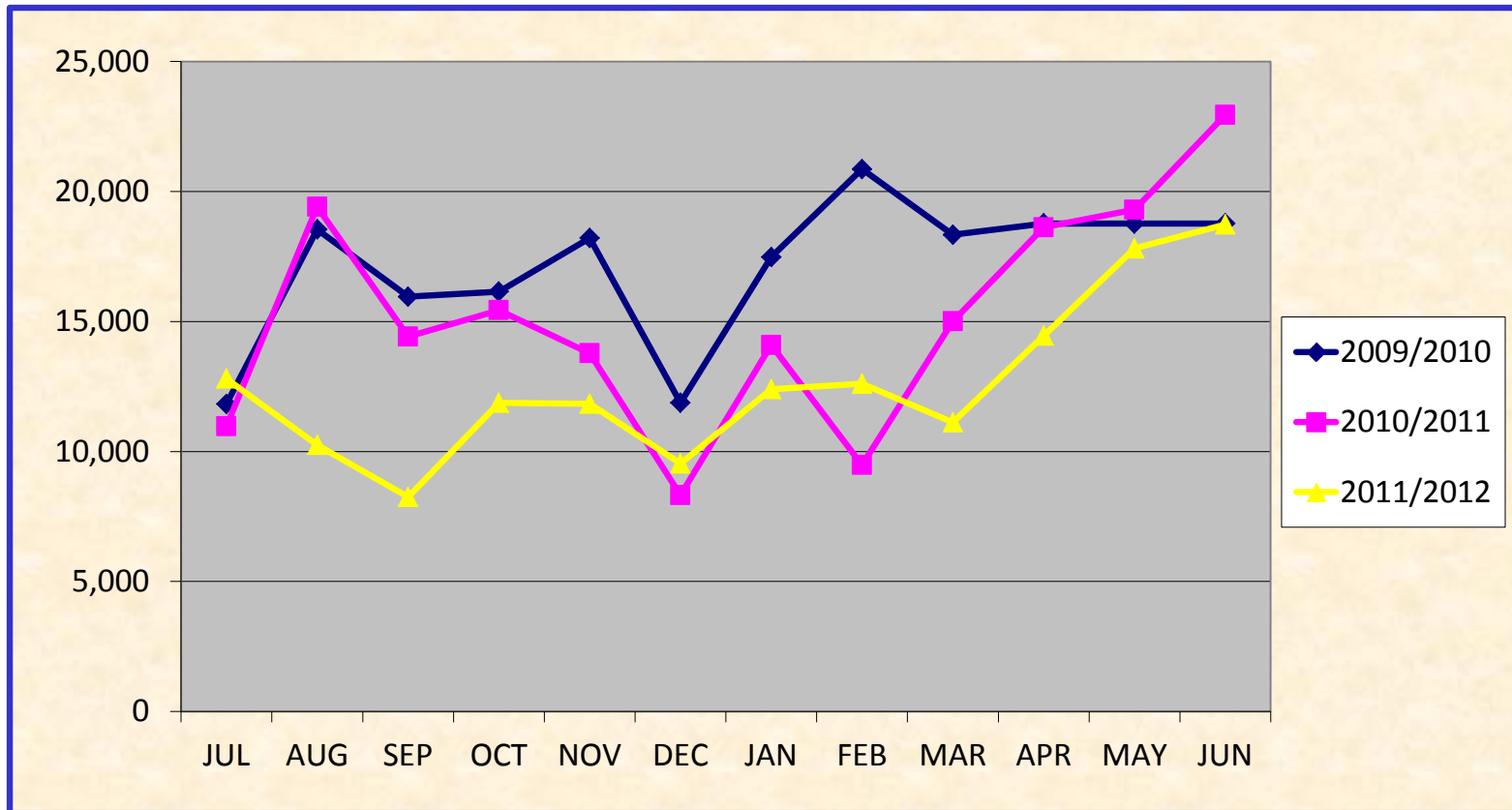
	Jul-11	Aug-11	Sep-11	Oct-11	Nov-11	Dec-11	Jan-12	Feb-12	Mar-12	Apr-12	May-12	Jun-12	To Date
Berkeley							112			111	34	25	282
Irvine						2,616		393			3,845	3,340	10,194
Los Angeles													
UCLA Library	5,385	5,707	9,278	3,759	7,119	4,886	3,301	1,395	3,524	7,776	12,635	16,764	81,529
FATA													0
Los Angeles Subtotal	5,385	5,707	9,278	3,759	7,119	4,886	3,301	1,395	3,524	7,776	12,635	16,764	81,529
Riverside			1,984		2,137			1,918			2,759		8,798
San Diego						3,111	2,557	3,410	5,702	4,484	4,227	6,217	29,708
Santa Barbara	1,835	1,880	2,135	1,795		1,969		1,921			354	452	12,341
UCL Shared Print			9,556		2,426		2,846		3,681	4,138	2,597	8,516	33,760
WEST Shared Print							204	2,597					2,801
UCL JSTOR	266					3,032	2,679	6,091	7,503	476		254	20,301
Deposits Received	7,486	7,587	22,953	5,554	11,682	15,614	11,495	15,128	20,410	16,985	26,451	35,568	199,714

U. C. Southern Regional Library Facility Items Added By Campus From July 2011 Thru June 2012



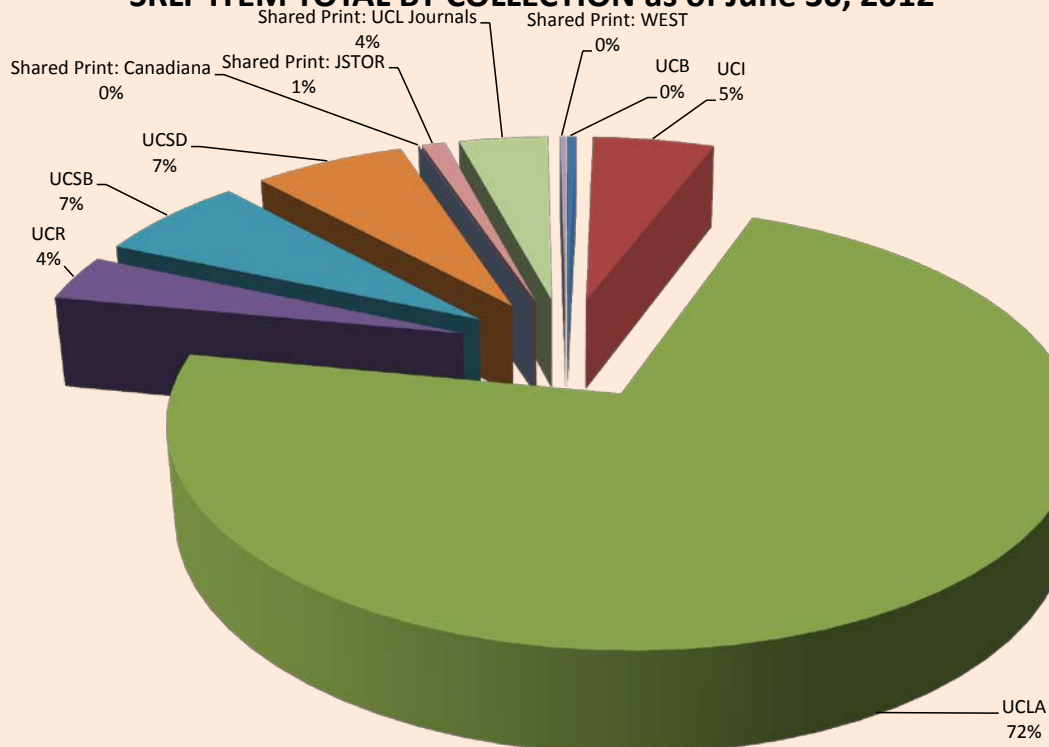
Items Added	Jul-11	Aug-11	Sep-11	Oct-11	Nov-11	Dec-11	Jan-12	Feb-12	Mar-12	Apr-12	May-12	Jun-12	2011/12 TOTAL
UCL Shared Print	2,918	4,023	2,352	1,842	2,544	1,339	495	1,626	3,051	5,427	2,222	2,301	30,140
UC JSTOR	219	1,002	809	214	16	261	103	180	5	351	370	1,092	4,622
WEST Shared Print								494	1,557	1,328	2,440	53	5,872
Irvine	806	241	0	229	0	64	1,019	64	0	0	96	0	2,519
Los Angeles													
UCLA Library	6,631	4,593	3,084	8,406	7,441	6,923	9,819	6,573	2,265	5,089	8,461	11,045	80,330
FATA													
Los Angeles Sub-Total	6,631	4,593	3,084	8,406	7,441	6,923	9,819	6,573	2,265	5,089	8,461	11,045	80,330
Riverside	1,270	405	1,525	80	945	593	294	157	128	9	112	154	5,672
San Diego	223	392	355	1,312	515	199	744	2,585	1,576	2,606	3,778	4,623	18,908
Santa Barbara	956	600	932	0	394	418	25	1,109	2,541	0	704	560	8,239
Total	12,804	10,254	8,248	11,869	11,839	9,536	12,396	12,608	11,118	14,459	17,813	18,736	151,680

**ITEMS ADDED
JULY 2009 thru JUNE 2012**



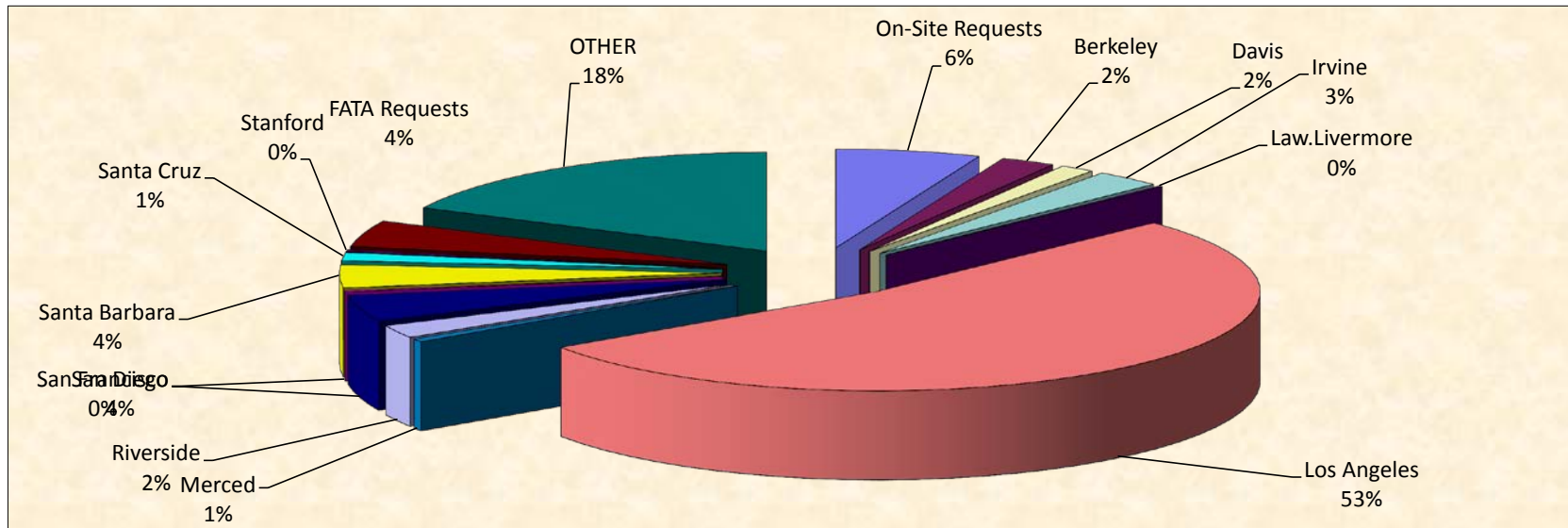
Added	JUL	AUG	SEP	OCT	NOV	DEC	JAN	FEB	MAR	APR	MAY	JUN	TOTAL
2009/2010	11,824	18,542	15,956	16,150	18,211	11,875	17,480	20,863	18,336	18,769	18,765	18,769	205,540
2010/2011	10,971	19,412	14,421	15,438	13,783	8,321	14,097	9,477	15,009	18,622	19,299	22,945	181,795
2011/2012	12,804	10,254	8,248	11,869	11,839	9,536	12,396	12,608	11,118	14,459	17,813	18,736	151,680
Total	35,599	48,208	38,625	43,457	43,833	29,732	43,973	42,948	44,463	51,850	55,877	60,450	539,015

SRLF ITEM TOTAL BY COLLECTION as of June 30, 2012



Southern Regional Library Facility		
Item Totals by Collection, June 30, 2012		
Campus/Collection	% of Collection	Items Deposited
UCB	0.40%	25,668
UCI	5.36%	342,940
UCLA	72.23%	4,625,721
UCR	3.57%	228,325
UCSB	6.63%	424,546
UCSD	6.62%	424,171
Shared Print: Canadiana	0.01%	960
Shared Print: JSTOR	1.04%	66,284
Shared Print: UCL Journals	3.91%	250,466
Shared Print: WEST	0.23%	14,786
Grand Total	100.00%	6,403,867

PAGING REQUESTS JULY 2011 thru JUNE 2012

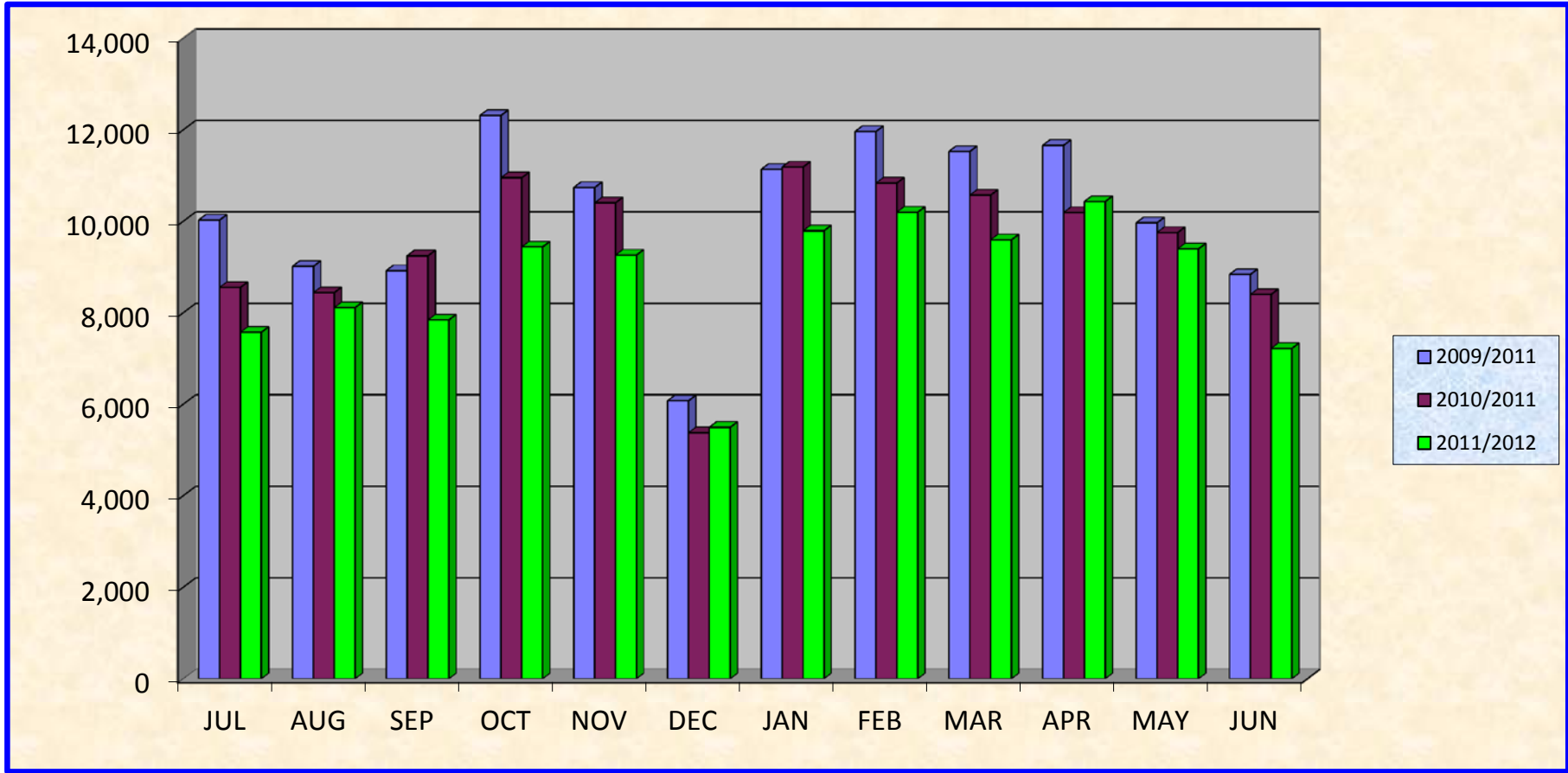


	Jul-11	Aug-11	Sep-11	Oct-11	Nov-11	Dec-11	Jan-12	Feb-12	Mar-12	Apr-12	May-12	Jun-12	To Date
On-Site Requests	708	708	583	571	557	502	548	547	411	388	418	466	6,407

Origin of Paging Requests

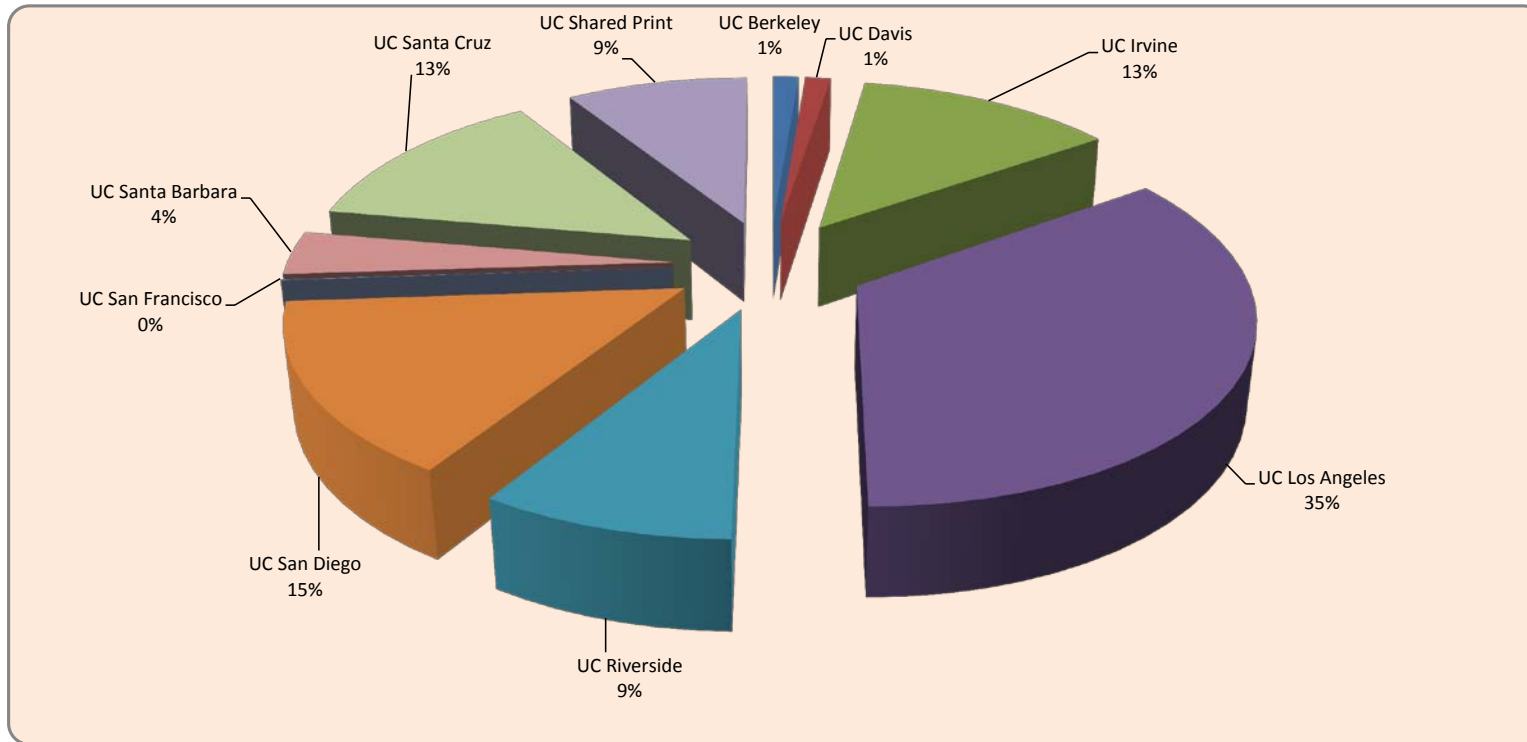
	Jul-11	Aug-11	Sep-11	Oct-11	Nov-11	Dec-11	Jan-12	Feb-12	Mar-12	Apr-12	May-12	Jun-12	To Date
Berkeley	186	212	220	222	212	143	217	275	213	211	156	139	2,406
Davis	139	108	138	138	144	62	189	162	136	123	117	65	1,521
Irvine	122	233	203	274	302	136	313	376	225	302	278	154	2,918
Law.Livermore	16	9	11	14	7	17	14	10	20	20	4	12	154
Los Angeles	4,113	4,189	3,869	4,807	4,997	2,659	5,082	5,230	5,182	5,664	5,052	4,075	54,919
Merced	28	37	60	72	57	20	37	66	53	59	33	22	544
Riverside	199	186	120	170	168	156	206	221	203	210	257	101	2,197
San Diego	303	428	466	397	383	193	516	454	298	428	445	198	4,509
San Francisco	14	12	14	13	14	9	15	13	24	20	22	14	184
Santa Barbara	230	268	326	381	287	153	410	358	348	526	348	259	3,894
Santa Cruz	96	111	126	144	115	113	142	131	106	128	129	62	1,403
Stanford	13	11	18	37	9	11	21	26	22	10	57	20	255
SUB TOTAL	5,459	5,804	5,571	6,669	6,695	3,672	7,162	7,322	6,830	7,701	6,898	5,121	74,904
FATA Requests	219	469	284	396	309	365	508	335	501	388	414	311	4,499
OTHER	1187	1131	1404	1803	1700	956	1574	1996	1853	1954	1667	1322	18,547
GRAND TOTAL	7,573	8,112	7,842	9,439	9,261	5,495	9,792	10,200	9,595	10,431	9,397	7,220	104,357

PAGING REQUESTS
JULY 2009 thru JUNE 2012



	JUL	AUG	SEP	OCT	NOV	DEC	JAN	FEB	MAR	APR	MAY	JUN	TOTAL
2009/2011	10,028	9,014	8,921	12,313	10,739	6,074	11,137	11,964	11,526	11,660	9,967	8,836	122,179
2010/2011	8,555	8,439	9,246	10,952	10,405	5,376	11,187	10,836	10,572	10,192	9,755	8,399	113,914
2011/2012	7,573	8,112	7,842	9,439	9,261	5,495	9,792	10,200	9,595	10,431	9,397	7,220	104,357
TOTAL	26,156	25,565	26,009	32,704	30,405	16,945	32,116	33,000	31,693	32,283	29,119	24,455	340,450

**Southern Regional Library Facility
Report on Campus Contributions to Shared Print Collections at SRLF 2011-2012**

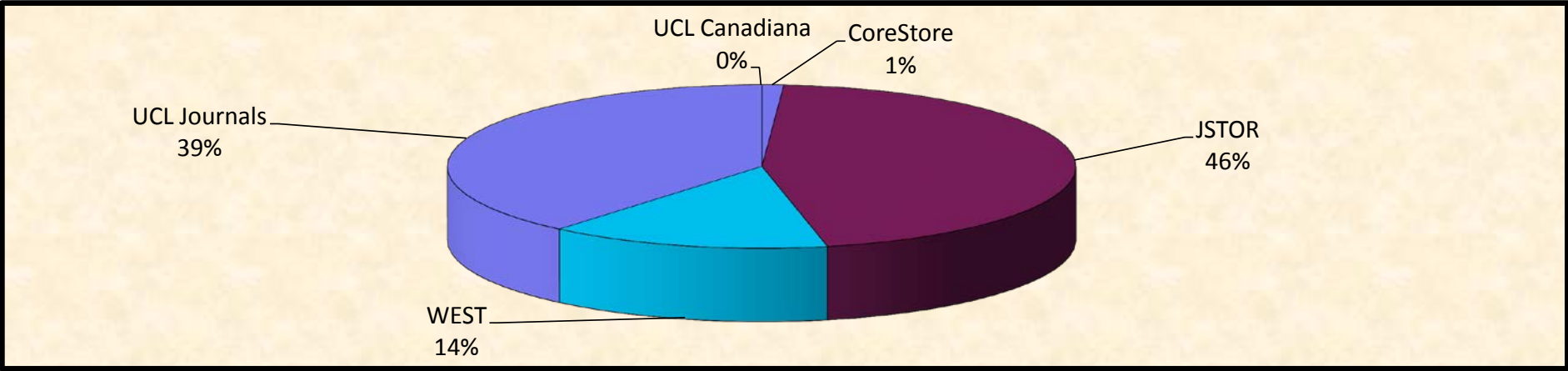


Campus	JSTOR 2006 2011	JSTOR 2011/2012	JSTOR Grand Total	CORESTORE 2005/2006	WEST 2011/2012	Ultimate Total to Shared Print
UC Berkeley	1,028	10	1,038	0	0	1,038
UC Davis	851	173	1,024	0	0	1,024
UC Irvine	8,750	700	9,450	41	893	10,343
UC Los Angeles	17,654	1,662	19,316	685	8,938	28,254
UC Riverside	4,541	1,712	6,253	65	874	7,127
UC San Diego	9,775	817	10,592	0	1,547	12,139
UC San Francisco	30	0	30	0	0	30
UC Santa Barbara	2,609	298	2,907	87	174	3,081
UC Santa Cruz	10,773	6	10,779	0	0	10,779
UC Shared Print	1,891	3,004	4,895	0	2,360	7,255
TOTAL	57,902	8,382	66,284	878	14,786	81,070

NOTE: CORESTORE items contributed to WEST Program in 2011/2012. CORESTORE 2005/2006 total subsumed into WEST 2011/2012 total.

Paging Requests for Shared Print Collections

July 2011 thru June 2012



	July 11	Aug 11	Sept. 11	Oct. 11	Nov. 11	Dec. 11	Jan. 12	Feb. 12	Mar. 12	Apr. 12	May 12	June 12	Total 2011/2012	Total from 05/06 - 10/11	Grand Total
CoreStore	0	0	0	0	0	0	0	0	1	0	0	0	1	2	3
JSTOR	1	10	6	6	6	2	1	0	0	1	3	5	41	26	67
WEST	0	0	0	0	0	0	0	0	0	0	5	8	13	26	39
UCL Journals	4	0	2	0	16	0	0	0	0	4	7	2	35	48	83
UCL Canadiana													0	21	21
Total	5	10	8	6	22	2	1	0	1	5	15	15	90	123	213